



THE CLF NEWSLETTER

Vol. XIV

May 2000

No. 2

May 13th Meeting

The speaker for the May 13th CLF meeting will be author and lecturer Robert de Berardinis, OMPL. Mr. de Berardinis is an expert on French research and will speak on methods for conducting effective genealogical research on ancestors living in France or the French colonies of North America during the colonial period. Emphasis will be on the use of primary and secondary sources available at or through Clayton Library.

At the CLF Executive Board meeting on April 13th, Mrs. Mary Smith Fay was elected as the Board representative on the CLF nominating committee. At the May 13th general membership meeting, four additional committee members will be elected. Nominations will be made from the floor. If only four individuals are nominated, voting will be by voice. If more than four nominations are made,

voting will be by ballot. Mrs. Fay will serve as temporary chair of the committee until its first meeting, at which time the committee will elect a permanent chair. The nominating committee has the responsibility for proposing a slate of officers for 2001, and that slate will be voted upon at the CLF general membership meeting November 11, 2000. ■

1920 Soundex Complete!

Thanks to the continued generous support of HPL, the CLF membership, and numerous contributing organizations, our goal of acquiring all of the 1920 Soundex microfilm has finally been met. Orders were placed recently for the last remaining rolls of the collection, making Clayton Library the only public library in Texas to own the complete set. A much larger collection than the corresponding population schedules, the 1920 Soundex consists of 8,585 rolls, representing an asset value of \$291,890. CLF extends its sincere thanks to all those individuals and organizations who contributed funds for this effort over the past several years. ■

President's Message

On March 3, 2000, Clayton Library Friends received a gift of \$25,000 from the William A. and Madeline Welder Smith Foundation. This very generous gift is one of several we have received from the Smith Foundation, and we are indeed grateful to the Foundation and its trustees. In consultation with Marje Harris, manager of the Clayton Library, we are using these funds to purchase 724 rolls of microfilm publication T621, *Index (Soundex) to Passenger Lists of Vessels Arriving at New York, July 1, 1902 - December 31, 1943*. There are 755 rolls in this publication, and the remaining 17 rolls are either already owned by the library or will be purchased shortly. New York was a very important port of entry during the first half of the last century, and the passenger lists index

(Continued bottom of page 13)

NEXT MEETING
Saturday
May 13th, 10:00 a.m.
Bayland Community Center

SPEAKER
Robert de Berardinis
Lecturer and Author

TOPIC
French Research:
Methods, Sources,
Strategies, and Tips



CLAYTON LIBRARY FRIENDS

P. O. Box 271078

Houston, Texas 77277-1078

Established 1987

Clayton Library Friends is a tax-exempt, non-profit organization under IRS Code 501(c)(3). The sole purpose of CLF is to enrich the resources and facilities of the Clayton Library Center for Genealogical Research.

OFFICERS

Donald E. Pusch President

Elizabeth Nitschke Hicks 1st VPMary Smith Fay 2nd VP

Patricia Palmer Metcalfe .. Secretary

Jose O. Guerra, Jr. Treasurer

FIRST TERM DIRECTORS

Alfred Davis IV

Charles L. Chambers

Patricia Marburger

SECOND TERM DIRECTORS

John Dorroh

Kim Allen Morton

Gayle Sandstedt Workman

CLF NEWSLETTER STAFF

Editor: Donald E. Pusch

Assistant Editors:

Emily Croom, John Dorroh,

Suzanne Gay, Pat Metcalfe

Annual Membership Dues

Individual \$10.00

Two people (same address).. \$15.00

Special Friends

Contributor \$1 to \$49

Donor \$50 to \$99

Patron \$100 to \$249

Sponsor \$250 to \$499

Benefactor \$500 and above

Clayton Library Friends Financial Report

January 1 through March 31, 2000

CHECKING ACCOUNT—Wells Fargo Bank

Starting Balance \$ 32,902*

Unrestricted Funds 2,457

Restricted Funds:

Binding 458

Endowment - 0 -

Other 26,987

CLF Operating Funds 2,989

2001 Prepaid Dues 10

Deposits, total 53,794

Unrestricted Funds 14,674

Restricted Funds:

Binding - 0 -

Endowment - 0 -

Other 27,185

CLF Operating Funds

2000 Dues 11,935

Withdrawals, total 24,418

Unrestricted Funds 500

Restricted Funds:

Binding 202

Endowment - 0 -

Other 18,590

CLF Operating Funds 5,126

Ending Balance 62,277

Unrestricted Funds 16,631

Restricted Funds:

Binding 257

Endowment - 0 -

Other 35,582

CLF Operating Funds 9,798

2001 Prepaid Dues 10

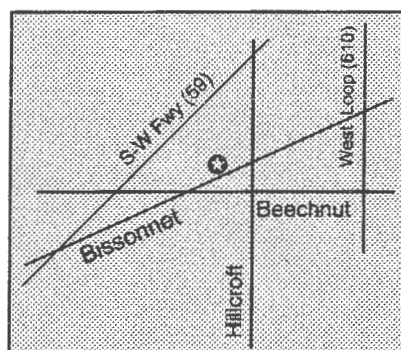
ENDOWMENT FUND—Univ. Bank 12,560

Certificate of deposit #1 12,560

Savings account 4,137

Jose O. Guerra, Jr., Treasurer

* Starting balance reflects a corrected end-of-year balance for 1999.



CLF Meeting Location:
Bayland Community Center
6400 Bissonnet
Houston

The Southern Claims Commission "Revisited"

by Elizabeth Nitschke Hicks

Great News! Since the November 1996 article I wrote on this group of records, Clayton has acquired the BARRED and DISALLOWED claims on microfiche (cabinet 68, drawers 1 & 2). The first four fiche contain the index to these claims. There are three other finding aids to these claims at Clayton. The first is an index (on microfilm) from the National Archives titled "Consolidated Index of Claims Reported by the Commissioner of Claims Southern Claims Commission 1871-1880" (cabinet 48, drawer 8). The second and third are books by Dr. Gary B. Mills: *Civil War Claims in the South: An Index of Civil War Damage Claims Filed Before the Southern Claims Commission 1871-1880* (GEN 973.7 M657 USA) and *Southern Loyalists in the Civil War* (GEN 973.7 M657 USA). All of these indexes give the name of the claimant, the claim number, and the state. The first book also gives the claimant's county of residence.

The Southern Claims Commission was created by Congress in 1870 as a result of pleas from citizens who had sustained losses during the Civil War. The commission addressed claims (for personal property only) from residents of Alabama, Arkansas, Florida, Georgia, Louisiana, Mississippi, North and South Carolina, Tennessee, Texas, Virginia, and West Virginia. The Southern Claims Commission appointed local commissioners to hear these claims, determine the authenticity of each claim, and decide if indeed the claimant had been loyal to the Union during the war. Yes, the claimant had to swear he/she had been loyal to the Union and had not provided aid of any kind in support of the Confederacy. Before you say, "Not MY southern ancestor!" you should consider the fact that many people did whatever they had to do to receive compensation. Many southerners did not consider it "lying" to "lie" to a Yankee (especially a bureaucrat Yankee).

There are three types of claims:

ALLOWED. The U.S. paid the claim, and the only records that survive are the name of the claimant, place of residence, what the claim was for, and the amount paid.

BARRED. Claim was either filed too late or the commissioners ruled the claimant a Confederate supporter.

In this case, only the name, place, and description of loss are given. Check these anyway, as there are exceptions.

DISALLOWED. Claim was not paid, but for reasons other than late filing or the fact that the claimant was a Confederate supporter. A disallowed claim usually gives the most information for the genealogist and/or historical researcher. What information is in this type of claim? You will get the claimant's answers to 80 questions asked by the commissioners plus the answers given by the claimant's witnesses. Both claimant and witnesses were asked, "What is your name, your age, your residence and how long there, and what is your occupation? If you are not the claimant, in what manner, if any, are you related to the claimant or interested in the success of the claim?" A few other examples of questions include the following: "Where were you born? If not born in the U.S., when and where were you naturalized? Produce your naturalization papers, if you can. Did you have any near relatives in the Confederate army or in any military or naval service hostile to the U.S.? If so, give names, ages on entering service, present residence, if living, what influence you exerted, if any, against their entering the service, and in what way you contributed to their outfit and support." For female claimants, "Are you married or single? If married, when and where were you married? Where does your husband reside, and why has he not joined you in this petition? How many children have you? Give their names and ages...." Witnesses were asked, "In whose favor are you here to testify? How long have you known that person altogether, and what part of that time have you intimately known him? Did you live near him during the war, and how far away? What was the public reputation of the claimant for loyalty or disloyalty to the U.S. during the war?" I think you get the idea of how these claims can provide very helpful and interesting information.

To see if your ancestor had a claim, search for his/her name on one of the first four microfiche (cabinet 68, drawer 1 or 2). Listed with the person's name will be the state, commission number, office number, report number, year of claim, and type claim (allowed, barred, disallowed).

(Continued bottom of page 4)

❑ WHAT'S IN THE LIBRARY

Kuntz Collection Catalogue

by Robert de Berardinis, OMPL

Through a recent anonymous donation, Clayton Library has acquired *The Rosemond E. and Emile Kuntz Collection: A Catalogue of the Manuscripts and Printed Ephemera*.^{*} (The book is not yet catalogued and shelved but should be available soon.) The *Catalogue* is an excellent guide, calendar, and comprehensive name and subject index to the Kuntz manuscript collection, part of Special Collections of Howard-Tilton Memorial Library, Tulane University, New Orleans. The collection holds more than 3,500 manuscripts collected over an 80-year period. The bulk of this material covers the French and Spanish colonial period through Reconstruction in Louisiana (especially New Orleans), Mississippi, Alabama, and Texas—a focus being Louisiana history, society, and culture.

Examples of the collection are numerous marriage contracts and wills as well as original copies (*extraits*) of sacramental acts concerning the genealogy of several early Louisiana families. There is also a large amount of correspondence. To obtain copies of documents found in the *Catalogue*, researchers should send requests to Special Collections; Jones Hall, Room 202; Tulane University;

New Orleans, LA 70118-5682. Photocopies are 75¢ per page (February 2000). Some of the documents in the collection are too fragile to copy.

When writing for copies, it is important to give the classification period and then to cite fully the item as given in the *Catalogue*, i.e., the document date and title, and the number of pages. The classification periods are the categories in the *Catalogue*'s table of contents. An example of a cite would be the recipient's copy of the marriage of Captain Henri d'Orgon and Magdelaine Duvergés (the original not being extant at St. Louis Cathedral) as follows: "French colonial period, 1753, April 26, Marriage Certificate of Chevalier Henry D'Orgon and Marie Magdelaine Duvergés, 2 pages." ■

^{*} Guillermo Falcón, ed. (New Orleans: Howard-Tilton Memorial Library of Tulane University, 1981). This book was given to Clayton Library in memory of Isabelle Lafonta Ewing, a friend of Felix Kuntz. Mr. Kuntz began donating portions of the collection to Howard-Tilton Memorial Library in 1954.

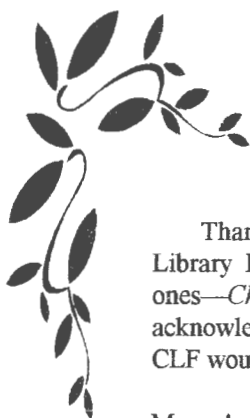
Southern Claims Commission (Continued from page 3)

Following the index fiche, claims are arranged by type. If a barred claim, look for your ancestor's claim by the ancestor's/claimant's name. If a disallowed claim, look for the claim according to report number, then the office number. When you find the correct fiche, look for the claim by commission number and ancestor's name. If you find a claim that has nothing in it but a title page, look for the notations "U.S. House of Representatives" or "U.S. Court of Claims." These notations mean that your ancestor's claim file was sent to another jurisdiction. To find it, you will need a different claim number. To get this information, you must write to the General Reference Branch, National Archives, Washington, D.C. 20408. Be sure to state that you are looking for a Southern Claims Commission claim. Give the name of the claimant, the state, and the claim number that was found on the fiche index. Send no money;

the National Archives will respond and tell you how to proceed. This may seem complicated, but believe me, it is worth the effort!

If you do not find your ancestor listed, try this technique: Go to the 1860, 1870, or 1880 federal censuses and write down the names of your ancestor's neighbors (heads of households); then repeat your search to see if any of your ancestor's neighbors had claims. There is a very good chance your ancestor was one of the witnesses for the neighbor.

These claims are a good source of genealogical and historical information for ancestors in the "burned counties," and if a claimant died during the claims process, his heirs often took up the claim. The heirs would then have to prove their relationship to the deceased using Bible records, depositions, etc., all of which may hold valuable genealogical information. Happy Hunting! ■



Angels Report

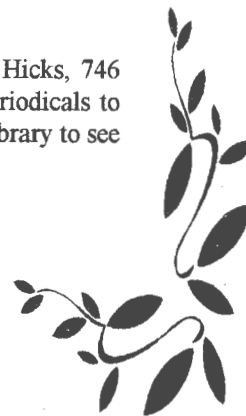
Thanks to the membership's continued support to the Angels program, Clayton Library Friends was able to renew ALL the 1999 subscriptions and add two new ones—*Chicago Genealogist* and *Foothills Inquirer* (Colorado). Since our February acknowledgements, several other people have contributed funds for the program, and CLF would like to acknowledge their support:

- Mary Ann Austin - Subscription renewal for *English Researcher* (in memory of her father, Robert Suydam Osiecki).
- Janell Jasper - Subscription renewal for *Tennessee Genealogy & History* (in memory of James Ferguson Hatfield).
- Ann Brittain Reed - Subscription renewal for *Blue Grass Roots* (Kentucky).
- Betty M. Odom - Subscription renewal for *Family Puzzlers* (Georgia).
- Myron F. Steves - Subscription renewal for *Lifelines* (Northern New York).
- Dr. Mavis P. Kelsey - Monetary donation for the Angels program.

Although the primary purpose of the Angels program is to underwrite annual periodical subscriptions for the library, we also try to find missing issues of periodicals that Clayton already owns. Since only complete sets are bound and placed on the shelves, it is important for us to fill in missing issues wherever possible. The following "Angels" have assisted in this endeavor:

- Gerard Slagle - *The Midland Ancestor* (England), *The Septs* (Ireland), *Der Blumenbaum* (Sacramento German Genealogy Society), *Review* (Swiss-American Historical Society), *Irish Roots, Familial* (Ireland), and *Directory of Irish Family History Research*.
- Eva J. Cunningham - *The Quarterly* (York Co., S.C.), *Bradley County Roots* (Arkansas), and *The Bulletin* (Chester District, S.C.).
- Lucy Klopp, *The Louisiana Genealogical Register*, missing issue that completes an entire run of this publication.

If you would like to support the Angels program, please contact Liz Hicks, 746 Edgebrook Dr., Houston, TX 77034-2030, (713) 944-1118. If you have periodicals to donate to Clayton, please call Liz and she will be happy to check with the library to see if the issues you have are needed in the periodical collection. ■



Houston Public Library On-line Databases: Saving Time with PERSI, Part One

by Robert de Berardinis, OMPL

Of the myriad electronic databases offered by Houston Public Library, several are of key importance to genealogists, offering accelerated finding aids to published material on individuals, families, local and regional history, original records, and genealogical problem solving. These databases are available on computer terminals at HPL Central and at many of the HPL branch libraries (including Clayton). Also, HPL PowerCard holders can access some of these databases directly from their home computers via the Internet.¹ In this and the next several issues of *The CLF Newsletter*, information will be presented on those databases most efficacious to genealogical research. These include PERSI (the primary focus of the current article), Ancestry.com, AP Photo Archive, Archives USA, Biography and Genealogy Master Index (GaleNet), and MLA Bibliography. Also of importance are the various OCLC FirstSearch databases, including Article First, Contents First, Humanities Abstracts, OCLC Union List of Periodicals, and the OCLC Periodical Contents Index, which includes indexes to articles, article titles, and article abstracts. The techniques used to access these databases are similar; therefore, researchers mastering one or two will be able to learn quickly the others.

PERSI is an acronym for Periodical Source Index (not to be confused with OCLC FirstSearch's Periodical Contents Index). Its data, compiled by the Allen County (Indiana) Public Library, comes from indices of surnames, localities, dates, subjects, and authors in hundreds of genealogical publications from the U.S., Canada, and several European countries. Because of the time lag between article publication and preparation of the associated indices, PERSI may be missing data on articles published within the previous 12 months. Also, although the scope of this database is truly mind-boggling, it is neither comprehensive (it does not span all genealogical publications) nor completely accurate. It should *always* be used in conjunction with the books *Genealogical Periodical Annual Index* (016.929 G326 USA) and *Index to Genealogical Periodical Literature* (973 S751), both

available in the USA section at Clayton Library. Within the HPL system, Clayton is currently the only library having access to the PERSI database, which, as now configured, requires use of a component CD-ROM.²

To begin, select the PERSI CD-ROM with the matching number (1 or 2) for the computer being used. Insert the CD-ROM and double left-click on the **PERSI** icon on the desktop. The Ancestry.com window should appear³ and three buttons will be displayed: **SEARCHING**, **HELP**, and **ABOUT PERSI**. The **ABOUT PERSI** button will give information regarding the periodicals covered, how PERSI is compiled, version number, etc. The **HELP** button is self-explanatory. Single left-clicking on the **SEARCHING** button will bring up a new window containing nine buttons. They are:

1. **GENERAL KEYWORD SEARCH (ALL PERSI)**
2. **SEARCH FOR U.S. & CANADIAN ARTICLES BY LOCATION AND KEYWORD**
3. **SEARCH ARTICLE TITLES BY KEYWORD**
4. **SEARCH FOR FOREIGN ARTICLES BY LOCATION AND KEYWORD**
5. **SEARCH SURNAME SECTION BY SURNAME**
6. **SEARCH FOR "How To" ARTICLES BY RECORD TYPE AND KEYWORD**
7. **SEARCH FOR ARTICLES BY LOCATION AND RECORD TYPE**
8. **SEARCH FOR PERIODICALS BY TITLE, TOPIC, AND/OR PUBLISHER**
9. **EXIT**

Above these nine search buttons, there is a new tool bar just below the menu bar. The tools are **REFRESH**, **OBJECT BORDER**, **TEMPLATE 9**, **PREVIOUS**, **HITS**, **NEXT**, **TAG**, **BACKTRACK**, **NOTE**, **HIGHLIGHTER**, and **BOOKMARK**.

Use of the PERSI database is best illustrated through examples, eight of which (corresponding to the eight search routines) are presented in the following paragraphs.

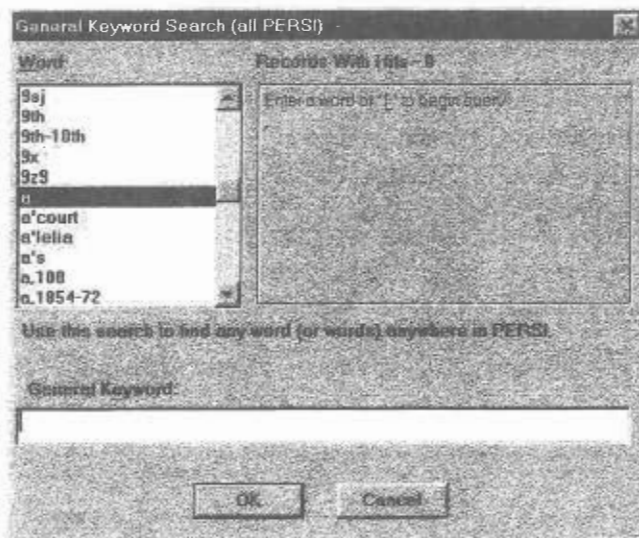


Fig. 1. General Keyword Search (All PERSI) Screen

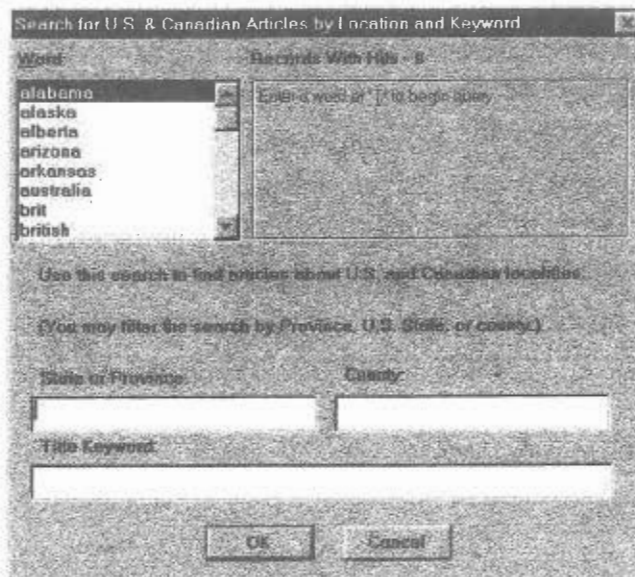


Fig. 2. Search for U.S. & Canadian Articles by Location and Keyword Screens

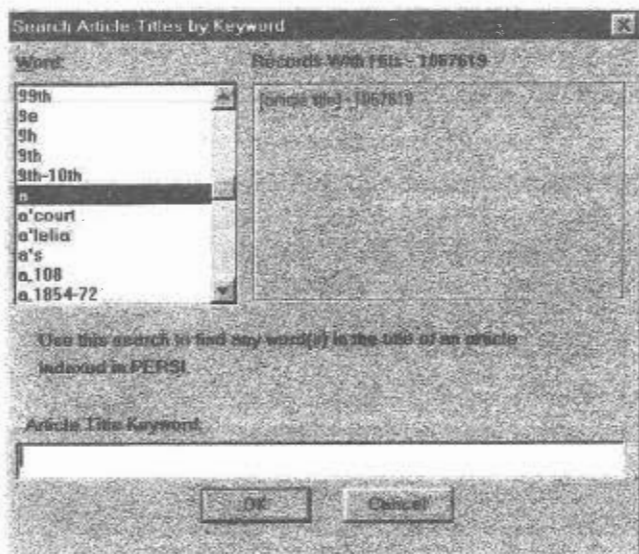


Fig. 3. Article Titles by Keyword Screen

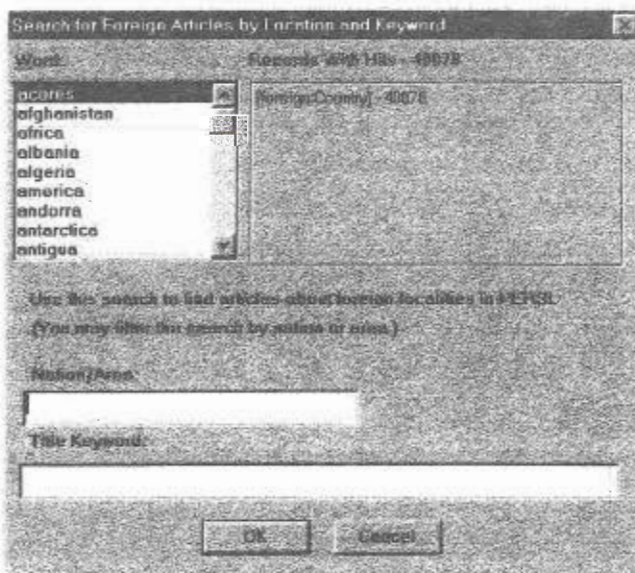


Fig. 4. Foreign Titles by Location and Keyword Screen

Search by Surname Section by Surname

Word: Records With Hits - 440154

Surname: []

Title Keyword: []

OK Cancel

Fig. 5. Surname Section by Surname Screen

Search for "How To" Articles by Record Type and Keyword

Word: Records With Hits - 18194

Record Type: []

Title Keyword: []

OK Cancel

Fig. 6. "How To" Articles by Record Type and Keyword Screen

Search for Articles by Location and Record Type

Word: Records With Hits - 0

State or Province: []

County: []

Foreign County: []

Record Type: []

Title Keyword: []

OK Cancel

Fig. 7. Articles by Location and Record Type Screen

Search for Periodicals by Title, Topic and/or Publisher

Word: Records With Hits - 8878

Topic: []

Publisher: []

Periodical Title: []

OK Cancel

Fig. 8. Periodicals by Title, Topic, and/or Publisher Screen

the search, left click on the **SEARCH SURNAME SECTION BY SURNAME** button. A new window will appear with a data entry screen (fig. 5). Type in a surname, for example, "voorhies." Then single left-click the **OK** button. This produces the exact same results obtained on the **GENERAL KEYWORD SEARCH (ALL PERSI)** when the keyword "voorhies" was entered.

Example 6: Search for "How-To" Articles by Record Type and Keyword. This type search allows the researcher to locate useful articles on how to use certain types of records, e.g., census, tax lists, etc., or how to go about finding a needed piece of data, e.g., a woman's maiden name. Begin by single left-clicking on the **SEARCH FOR "How To" ARTICLES BY RECORD TYPE AND KEYWORD** button. A new data entry screen appears (fig. 6). For this example, type "maiden name" in the "Keyword" data entry screen. Then single left-click the **OK** button. One result appears, "Twenty Ways to Find a Maiden Name" in *Quest*, vol. 9, no. 4. Expanding the search to include record types and different keywords will obviously increase the number of "How To" articles that can be found on a given subject.

Example 7: Search for Articles by Location and Record Type. To begin this type search, left-click on the **SEARCH ARTICLES BY LOCATION AND RECORD TYPE** button. A new data entry screen appears (fig. 7). Under "Locality," type "tennessee" and "davidson." In the data entry screen under "Record Type," type "probate." Then single left-click the **OK** button. Two results appear in the same format as in previous examples.

Example 8: Search for Periodicals by Title, Topic, and/or Publisher. To perform this type search, left-click on the **SEARCH FOR PERIODICALS BY TITLE, TOPIC, AND/OR PUBLISHER** button and then enter the desired search words as in previous examples. This feature of PERSI is a general search engine (fig. 8) for finding theme related periodicals, the name of a periodical published by a particular genealogical society, or articles for which the researcher needs the full bibliographic citation. Search results are displayed in the same format as previous examples.

As can be seen from the examples, all of the PERSI search mechanisms have similar user interfaces and the search results are displayed in the same format, so the system is easy to learn. Once the basic PERSI search methods are understood, researchers should practice using them to conduct more and more complex searches. This will open up a whole new world of resources for the serious genealogist. As with all Clayton Library finding aids, assistance in getting started with PERSI can be provided by the library staff.

The next article in this series will delve into the more complex aspects of PERSI and how to use the PERSI search

features in combination with the Biography and Genealogy Master Index (GaleNet) and with Ancestry.com.

Notes

1. Instructions for installing the requisite software can be found through the HPL homepage at <http://www.hpl.lib.tx.us>. Follow the link "**Databases Online at Houston Public Library**" to the link "**You need to follow these instructions to enable remote access.**" There is also an overview of these instructions in Robert de Berardinis, "Using WorldCat and HPL's Interlibrary Loan Service for Genealogical Research," *The CLF Newsletter*, vol. 14, no. 1, (February 2000), pp. 9-13. Researchers can also get assistance from any HPL branch library or from HPL's telephone reference line, (713) 236-1313.

2. Clayton Library's access to PERSI is provided through a subscription to Ancestry.com. The same type access can be obtained by individuals who wish to use PERSI on their home computers. At the time of this writing, the minimum subscription price was \$59.95 per year.

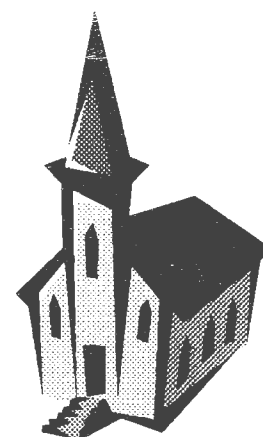
3. If a dialogue box appears asking for the ".nfo" file, the system has failed to locate the file persi.nfo. To clear the problem, select the persi.nfo file from among those listed in the dialog box and hit **ENTER**. If the persi.nfo file does not appear in the dialog box, it will be necessary to search for it on another drive. Those unfamiliar with such procedures should contact a Clayton Library staff member for assistance.

4. For use of which, see Robert de Berardinis, "The WebPAC Electronic Catalog System: A new tool for library research," *The CLF Newsletter*, vol. 13, no. 4 (November 1999), pp. 12-15. Local researchers may also wish to access the electronic catalogs of Fondren Library (Rice University) and M. D. Anderson Library (University of Houston) at <http://www.rice.edu> and <http://www.uhouston.edu>, respectively.



Rising Toward Heaven: Church Members and Their Records

by Trevia Wooster Beverly¹



Any serious research into the life of an ancestor should include a thorough analysis of the sociological and historical aspects of that ancestor's religious group. This is important because the customs and practices of the religious group had a tremendous influence on the behavior of the individual and his or her family. Our colonial American historians were among the first to concentrate on the evolution of the community with the family unit, and this included the part that local churches played. Sumner Chilton Powell used church and town records for an innovative examination of how Puritan settlers adapted English town patterns in their establishment of Sudbury, Massachusetts, in the 1640s.² In early rural settlements and in urban immigrant communities, the local church was frequently the leading, if not the only, regular meeting place.

For groups of people tied to specific religious beliefs, the 325 USA Dewey categories of colonization, immigration and migration (and the same topics in various states) should be noted. From 1714 to 1720, some 54 vessels brought the "Scotch-Irish" Presbyterians to Boston, and great numbers are to be found in Massachusetts and New York. An example of specific references is the work of David A. Haury.³

Rarely will family research be limited to a single church or denomination. To find the records of individuals, the obvious key is to find the church or synagogue that is still active where the records are held by the minister, priest or rabbi in charge. Minutes of the church will usually be with the church secretary, and early church records will often be held in the church's library or archive, if these exist. A primary resource for still-active individual churches and denominational offices, as well as libraries and other repositories, is the local Yellow Pages listing. Compiled listings for broader areas may be found in such compilations as the one prepared by the late Rev. Donald J. Hébert for southwest Louisiana,⁴ in which are covered not only Catholic churches but Protestant and Jewish as well.

Hébert gives, by civil parish, the names of the churches (or synagogues), their addresses, the types of records they hold, and the dates for which records exist.

Petty Pease Smith's *AASLH Directory of Historical Agencies*,⁵ while out-of-date, will also help the researcher find an organization dedicated to the denomination's history. This directory will be found in the reference section at Clayton and at almost every other library. If the denomination no longer exists, as is the case with the Shakers (United Society of Believers), check with the major historical society libraries in the region of interest. The *National Union Catalog of Manuscript Collections*⁶ lists many such holdings, indexing them by denomination.

In the 1930s, the WPA covered thousands of individual church records under the Historical Records Survey, but only a portion of the inventories was published. Whatever was published should be found in the major libraries, and one of them should have that state's unpublished inventories on deposit. At Clayton, check *The WPA Historical Records Survey*⁷ and *Check List of Historical Records Survey Publications: Bibliography of Research Project Reports*.⁸

The researcher will first want to check the state in which the church operated, if known. There are a variety of published histories and records. Check the finding aids notebooks at Clayton to see what may be on both microfilm and microfiche. Also check city directories⁹ for the location of interest, for both the known church and for the denominational listings of churches not known by name. Researchers familiar with church records of baptisms (or christenings), marriages, and funerals will sometimes overlook other records. For example, if the church was connected to a cemetery, there may be records of that activity that are separate from the funeral records.

Bishop William Meade's *Old Churches, Ministers and Families of Virginia*¹⁰ is not only one of Virginia's "must check" resources, it is also vital in searching for church records. While including many personal reminiscences of

the Episcopal Church in Virginia, Meade's work recovered many old vestry books, or parts thereof, that were supposed lost. Supplementing Meade is Fischer's *Albion's Seed*,¹¹ which includes a large section on "Religious Denominations and Sects" that discusses not only the more common religious denominations such as Baptist and Presbyterian but also groups such as Cameronian, Fifth Monarchist, Muggletonian, and Ranter.¹² Another section, "Religious ways," delves into the differences in social practices among the various religious denominations, providing valuable insights into such things as naming practices, marriage customs, and the manner in which deaths and burials were handled.

Near Frankfort, Kentucky, is the famous Forks of Elkhorn Church. In her history of this church,¹³ Ermina Jett Darnell has also given the history of settlement and migration of its people. The earliest minute book of the church begins in 1788. Grassy Spring Church, Province Baptist Church, Harmony and Midway Presbyterian Churches, Shiloh Methodist Church, and others have their origins in the Forks of Elkhorn. Before the Revolution, the Baptists back in Virginia had been bitterly persecuted by the Church of England, so much so that the congregation of Upper Spotsylvania decided to remove to Kentucky in September 1781. By 1828 the congregation had not only "white" and "colored" members but seventeen Indians from the nearby Choctaw Academy. This type of history may be found many times over by the researcher who seeks it.

Throughout Clayton's collection, one can find a wide selection of histories of specific churches, many of which discuss individual members of the congregation and contain abstracts of specific church records. Two excellent examples of church histories, both of which contain names of early members, are *Cedar Bayou Methodist Church Sesquicentennial History, 1844-1994*¹⁴ and *Early Catholic Church Records [of Alabama] 1874-1900*,¹⁵ the latter of which includes records of the members of Sacred Heart of Jesus Christ (Cullman), St. Boniface's Church (Hanceville), and St. Joseph's Church (Warrior). Another example is *The Records of Holy Trinity (Old Swedes) Church of Wilmington, Delaware, for 1697-1773*, published by the Historical Society of Delaware in 1890.¹⁶

There are also a number of other items for the researcher's use. A good example is *Baptist Clergy Census Directory, 1840-1849 and 1850-1852* (GEN 286 B222 USA), which is a compilation of information extracted from 500 source volumes. It gives the names of Baptist clergymen together with their association, state, and county. It also contains citations to the various source volumes.

County histories should always be accessed because they will usually include some mention of the county's churches and cemeteries and brief family histories and

other historical items. For Texas, such county histories were published in abundance during our Sesquicentennial in 1986.

Special collections should also be consulted. One example is the Shane Manuscripts,¹⁷ which cover a number of church records related to individual members.

When researching churches or any other subject, it is important to survey all of the available material at the library, since the information you seek may be in several different areas. Look in the general USA section, the reference section, and the appropriate state section. Also check the finding aids, the vertical file, the family histories section in the Clayton home, and, if appropriate, the foreign section. Pay careful attention to the library's finding aids. Many of the "state" finding aid binders will list microfilm related to churches or church records.

Compiled church records do not exist for all states, but some, like Louisiana and Virginia, have substantial resources in this area. Louisiana examples include the late Rev. Donald J. Hébert's church (and county) record abstracts, published in his 40-volume *Southwest Louisiana Records* and 12-volume *South Louisiana Records*.¹⁸ The Catholic Church is well along in publishing abstracts of two major collections of church records: *Diocese of Baton Rouge Catholic Church Records* (currently at 17 volumes)¹⁹ and *Archdiocese of New Orleans Sacramental Records* (currently at 14).²⁰ These major collections are supplemented by the works of De Ville, Forsyth, Mills, and others.

The foreign section contains many compilations of church records. In the Irish section, for example, researchers will find such books as *Clergy of Derry and Raphoe*,²¹ which gives parish histories and biographical and succession lists. In the German section, there is *German Church Books, Beyond the Basics*,²² which gives guidance in reading German script, or "churchbook German." This is an important tool with which to become familiar before approaching church records written in this German script.

Church and related records are often the most overlooked, probably because researchers do not always think of the major impact religion and religious practices had on the individual and the community. By identifying the denomination and then the specific church, much important information can be added to the family history.

Notes:

1. The author descends from a New England Congregationalist minister on her paternal side, and her mother's ancestry is Acadian (Catholic). She and her husband, Murphy (early Virginia Episcopal Church), are members of Houston's First Baptist Church, where, among other things, she teaches genealogy classes.

2. *Puritan Village: The Formation of a New England Town* (Middleton Conn.: Wesleyan University Press, 1963). CEN S974.44P

3. David A. Haurly, *Index to Mennonite Immigrants on United States Passenger Lists, 1872-1904* (North Newton Kans.: Mennonite Library and Archives, 1986). GEN 325.24 H375 USA

4. Donald J. Hébert, *A Guide to Church Records in Louisiana 1720-1975* (Eunice La.: Rev. Donald J. Hébert, 1975) GEN 976.3 H446 LA

5. Petty Pease Smith, *AASLH Directory of Historical Agencies*, 13th Edition (Nashville: American Association for State and Local History, 1986).

6. See Karen Stein Daniel, "The National Union Catalog of Manuscript Collections: An Untapped Source," *The CLF Newsletter*, vol. 10, no. 3 (August 1996), pp. 6-7.

7. *The WPA Historical Records Survey: A Guide to the Unpublished Inventories, Indexes, and Transcripts* (Chicago: Society of American Archivists, 1980). 973 H461 USA

8. Sargent B. Child and Dorothy P. Holmes, *Check List of Historical Records Survey Publications: Bibliography of Research Project Reports* (reprint; Baltimore: Clearfield Co., 1989). 016.973 C536 USA

9. Trevia Wooster Beverly, "Do You Have an 'Urban' Ancestor? Check out that City Directory!," *The CLF Newsletter*, vol. 13, no. 1 (February 1999), pp. 6-9.

10. Originally published in 1857 without an index. The 2-volume reprint edition (Baltimore: Genealogical Publishing Co., 1966) includes Jennings Cropper Wise's *Digested Index and Genealogical Guide...* (c1910), which indexes 6,900 proper names found in Meade's work. 975.5

M481 VA

11. David Hackett Fischer, *Albion's Seed: Four British Folkways in America* (New York: Oxford University Press, 1989). This book is available at HPL Central. 973 F529

12. Radical sects seemed to have proliferated during the seventeenth century, driven by a common impulse to reject other ordinances and become "seekers."

13. Ermina Jett Darnell, *Forks of Elkhorn Church: With Genealogies of Early Members* (1946; reprinted with additions and corrections, [Baltimore]: Clearfield Co., 1995). GEN 976.9 D223 KY

14. *Cedar Bayou Methodist Church Sesquicentennial History, 1844-1994* (Baytown, Tex.: The Committee, 1996). Shelves in the Texas section under Harris County. GEN 976.4141 C389

15. Hermina Voss Basch, *Early Catholic Church Records 1874-1900* ([Cullman Ala.?], 1990). GEN B298 ALA

16. Shelves in the Delaware section under New Castle County. GEN 975.1 B968 NEW C DEL

17. Trevia Wooster Beverly, "We dined on 'steak and whiskey': An overview of the Shane Manuscripts," *The CLF Newsletter*, vol. 11, no. 3 (August 1997), pp. 3-5.

18. Both series will be found in the Louisiana section. GEN 976.3 H446 LA

19. Baton Rouge: Diocese of Baton Rouge, Department of Archives, 1978-.

20. New Orleans: Archdiocese of New Orleans, 1987-.

21. Belfast: Diocesan Council of Derry and Raphoe, 1999. GEN C629 GR BRT Ireland

22. Kenneth L. Smith (Camden Maine: Picton Press, 1989). Shelves in the German section. GEN 943 S653

President's Message (Continued from page 1)

is a significant new acquisition for the library.

For the May 13th CLF meeting, Robert de Berardinis will speak on the topic of French research. I've previewed portions of this presentation, and I think the membership will enjoy it. Included are a number of examples from original records plus some very valuable information on how to obtain copies of original records.

As announced elsewhere in the newsletter, we have now ordered all of the remaining 1920 Soundex microfilm. Acquisition of this major resource (8,585 rolls of microfilm) was a significant undertaking for both Clayton Library and CLF, and I am indeed proud that we can boast having the complete collection. This would not have been possible without the generous donations received from foundations, organizations, and individual patrons. Thanks also to HPL for funding significant portions of this acquisition out of its own annual budgets.

Progress continues to be made toward our membership and fund raising objectives for 2000. As of this writing, the membership stands at 1,458; fund raising (including gifts-in-kind), at \$38,148.

Since CLF no longer publishes the yearbook (which included the donor lists), formal acknowledgement of our contributors, donors, patrons, sponsors, and benefactors is now being made in a newsletter insert. Immediate Past President Pat Metcalfe has compiled the 1999 donor list, which can be found at the centerfold of the current newsletter. Also included is a list of those individuals who provided gifts-in-kind to the library (through CLF). If your gift was received by CLF after December 31, 1999, it will be counted as a 2000 gift and will be acknowledged in the first newsletter of 2001.

Don Pusch
CLF President

Membership Report

I am pleased to report that our membership total is well ahead of what it was this same time last year, and prospects look very good for achieving our goal of 2,000 Clayton Library Friends in 2000.

I would like to thank Don Pusch and Tom Mathies who assisted in signing up new members at the Friends table we had in the foyer at Clayton during February. We hope to do this again later in the year and will be seeking volunteers.

The following volunteers assisted in giving friendly reminder phone calls to those Clayton Library Friends who had not renewed by March 1st: John Dorroh, Ruby Vigneaux Dusek, Edwin "Ed" Pierson, Jr., Patricia "Pat" Palmer Metcalfe, Carolyn Boor Cannon, Lorine O'Quinn Brinley, Virginia Conerly Cooke, Eddie Jean Scott Simmons, Lilas Peterson Johnson, Patricia Lynn Thompson, and Dorothy Carroll. Thanks to all!

A large membership is extremely important when CLF applies for grants or solicits funding for new acquisitions, as it reflects the level of "internal" support we are able to generate for CLF and Clayton Library. In 1999, this allowed us to raise money to purchase a number of significant additions to the Clayton collection:

- Completion of 1920 Soundex of Connecticut, Delaware, District of Columbia, Hawaii, Wisconsin, Wyoming, North Carolina, Michigan, Minnesota, Rhode Island, and Wyoming (501 rolls): \$28,288
- Index to the Boston Passenger Lists (282 rolls): \$9,588
- Boston Passenger Lists (105 rolls): \$3,570
- Index to the Baltimore Passenger lists (171 rolls): \$5,814
- City Directories 1890, 1910: \$10,140
- Ordinance Survey: Memoirs of Northern Ireland (26 volumes)
- Various Texas County records (microfilm)
- Over 200 books
- New microfilm reader: \$2,800

Please help us grow by "gifting" a friend or family member with a 2000 membership. Our dues remain \$10 per person (\$15 for two people at the same address). Make check payable to "CLF Dues" and mail to P.O. Box 271078, Houston, TX 77277-1078.

Thank you for your support!

Elizabeth Nitschke Hicks
1st VP (Membership)

Millennium Book Project

In the last issue of *The CLF Newsletter*, we published a list of ten books on Clayton Library's "wish list" and offered CLF members the opportunity to purchase these books for the library as part of our "Millennium Book Project." The response to this was overwhelming, and all of the books listed were "spoken for" within the first week after the newsletter appeared.

For this issue of the newsletter, we would like to offer the following books needed by Clayton Library. If you would like to make a contribution for one or more of these items, please contact CLF acquisitions chairman John Dorroh at (713) 781-2741. As with all such acquisitions, the library will affix a card inside the book's front cover acknowledging the gift and, if desired, indicating the individual being honored by the giver.

Bakeman, Mary. *Early Presbyterian Church Records from Minnesota, 1835-1871, including the church at Fort Snelling*. Brooklyne Park, Minn.: Park Genealogical Books, 1992. \$10.00

Braud, Gérard-Marc. *Les Acadiens en France: Nantes et Paimboeuf, 1775-1785: approche généalogique*. Nantes: Ouest Editions, 1999. \$37.00

Brooks, Marlene Rutland. *Warren County, Mississippi, Cemeteries*. Vicksburg, Miss.: M. R. Brooks, 1998. \$28.00

Denton City Death Records, Denton County, Texas, 1900-1957. [Denton, Tex.:] Denton County Genealogical Society, 1999. \$25.00

Escobar, Joel Rene, comp. *Index to the Family Tree Book*. Pharr, Tex.: Esco Publications, 1999. (This is a companion publication to *The Family Tree Book*.) \$20.00

Escobar, Joel Rene, ed. *The Family Tree Book (The F. W. Seabury Papers)*. Edinburg, Tex.: U. Santander Press, 1995. (Contains the genealogies of 92 families who were recipients of the first Spanish and Mexican land grants.) \$70.00

Escobar, Joel Rene. *Family History of Jose Maria Escobar and His Descendants*. San Antonio: Manguia Printers, 1997. \$65.00

Gillis, Norman E. *Early Inhabitants of the Natchez District*. 1963. Reprint, Greenville, S.C.: Southern Historical Press, 1999. \$32.50 (This is needed as a replacement for Clayton's current copy.)

Glazier, Michael. *The Encyclopedia of the Irish in America*. Notre Dame, Ind.: Univ. of Notre Dame Press, 1999. \$89.95

Haslam, Patricia L. *The Annotated Cemetery Book: Stowe, Vermont, 1798-1998*. Rutland: Town of Stowe

- Cemetery Commission, 1998. \$85.00
- Haynie, W. Preston. *Records of Indentured Servants and of Certificates for Land, Northumberland, County, Virginia, 1650-1795*. Bowie, Md.: Heritage Books, 1996. \$31.50
- Hébert, Donald J. *Louisiana Families in Southeast Texas (1840s-1940s): Selected Genealogical Records of Louisiana and Acadian Families from Southeast Texas Church and Civil Archives*. Rayne, La.: Hébert Publications, 1999. \$47.50
- Holcomb, Brent H. *Petitions for Land from the South Carolina Council Journals*, vol. 6, 1765-1770. Columbia, S.C.: B. H. Holcomb, 1999. \$48.00
- Holcomb, Brent H. *Petitions for Land from the South Carolina Council Journals*, vol. 7, 1771-1774. Columbia, S.C.: B. H. Holcomb, 1999. \$48.00
- Kluttz, James W. *Abstracts of Deed Books 20-24 of Rowan County, North Carolina, 1807-1818*. Cary, N.C.: J. W. Kluttz, 1999. \$30.00
- Michigan Historical Commission. *Michigan Biographies, including members of Congress, elective state officers, justices of the Supreme court, members of the Michigan Legislature, Board of regents of the University of Michigan, State board of agriculture and State board of education*. 2 vols. 1924. Reprint, Baltimore: Clearfield Company, 1999. \$65.00
- Minnesota's World War II Army Dead. Brooklyn Park, Minn. Park Genealogical Books, 1994. \$9.50
- Olsen, Monty. *Indices of Choctaw and Chickasaw Confederate Soldiers*. Calera, Okla.: Bryan County Heritage Association, 1996. \$25.00
- Pierson, Marion John Bennett. *Louisiana Soldiers in the War of 1812*. 1963. Reprint, Baltimore: Clearfield Company, 1999. \$22.50 (This is needed as a replacement for Clayton's current copy.)
- Revised Master Index to the New York State Daughters of the American Revolution Genealogical Records*. 2 vols. Zephyrhills, Fla.: Jean D. Worden, 1998. \$90.00 (Clayton currently has the 1972 edition.)
- Smith, Paul, and Tommie Smith. *Wilke-Clay-Fish Funeral Home, Austin, Texas [Book 1]: 1935-1950*. Austin, Tex: Ericson Books, 2000. \$25.00
- Smith, Paul, and Tommie Smith. *Wilke-Clay-Fish Funeral Home, Austin, Texas, Book 2: 1951-1960*. Austin, Tex: Ericson Books, 2000. \$25.00
- Stubblefield, Ruth. *Walker County, Texas, Black Cemeteries*. Huntsville: Walker County Texas Genealogical Society, 1999. \$23.00
- Swedish Genealogical Resources*. St. Paul: Swedish Genealogy Group, Minnesota Historical Society, 1994. \$8.00
- Townlands in Ulster: Local History Studies*. Belfast: Ulster Historical Foundation in association with the Federation for Ulster Local Studies, 1998. \$24.00
- Vilniaus Getas: kaliniu sarasai*. 2 vols. Vilniaus, Lithuania: Lietuvos Valstybinis Zydų muziejus, 1996, 1998. (Deals with Jews in the Vilnius ghetto.) \$40.00
- Ward, Roger G. *1815 Directory of Virginia Landowners and Gazetteer*, vol. 1, Central Region. Athens, Ga.: Iberian Publishing Company, 1997. \$30.00
- Ward, Roger G. *1815 Directory of Virginia Landowners and Gazetteer*, vol. 4, Northern Region. Athens, Ga.: Iberian Publishing Company, 1999. \$30.00
- Wellington, Walter W. *Cemeteries of Madison County Mississippi*. Canton, Miss.: Madison County Historical Society, 1997. \$35.00
- Winistorfer, Jo Ann. *Tracing your Dakota Roots: A Guide to Genealogical Research in the Dakotas*. Bismark: Dakota Roots, 1999. \$19.95

Correction

In the February newsletter, page 14, we announced the placement of orders for National Archives Microfilm Publications M327 and M696. In that announcement, it was incorrectly stated that this acquisition completes the library's collection of all available National Archives microfilmed passenger lists. This should have read, "all available nineteenth century passenger lists."

Our members would like to hear from you!

Do you know something interesting about an item in the Clayton Library collection? Have you developed an expertise with one of the finding aids, microfilm sets, ready reference books, or other resources? If so, please consider sharing that knowledge by writing an article for the newsletter. We especially need articles on the foreign collection and on any new acquisitions with which patrons may not be familiar. If you would like to contribute an article, please contact Don Pusch at (281) 326-3278 or John Dorroh at (713) 781-2741. ■

CLAYTON LIBRARY FRIENDS
Post Office Box 271078
Houston, TX 77277-1078

Non-Profit Org.
U.S. Postage
PAID
Houston, Texas
Permit No. 1747

CLAYTON LIBRARY FRIENDS

1999 Cash Donations

Clayton Library Friends wishes to acknowledge and thank the following organizations and individuals who have generously contributed funds to CLF during 1999 to enrich the resources and facilities of the Clayton Library Center for Genealogical Research.*

Benefactor -- \$500 and above

Cathcart Family Fund
Colonial Dames of the 17th
Century
Craig, Charles & JoAnne
Dixon, R C

Duke Energy
Exxon Corporation
Fransham, Robert
Green, Betty
Lewis, Ralph M

Thagard, W T
The Ladies' Reading Club
William A & Madeline Welder
Smith Foundation

Sponsors -- \$250 to \$499

Bussemey, Emile
Dorroh, John

Green, Albertine F & Tom
Southwestern Bell Foundation

Symonds Foundation

Patron -- \$100 to \$249

Alexander Love Chapter NSDAR
Bell, Paul
Brazos Valley Chapter DAR
Cannon, Carolyn
Caster, Richard & Mary Ann
Cover, A Eugene
Cox, Eugene
Cunningham, Eva
Dirnberger, Janet
Drye, John L
Enron Foundation

Hogue, Paul & Bernadette
Houston Colony Magna Carta Dames
Hutson, Micheline
Jones, Michael Byron
McGee, Creath & Virginia
Meche, Barbara
Miller, Anna & Pam Windham
Mommessin, Pierre & Mary
Morin, Robert
Perry, Loweader A
Plies, William J & Antonia E M

Proctor, Rita & Melvin
Pruett, Albert
Reis, Wendy A & Elaine J
Rogers, Virginia N
Rose, Richard
S Sorrell Chapter, Tex Soc DAR
Savage, Wallace
Simpson, Richard & Sherry
Snyder, Phillip & Betty
Spangler, Harold G & Miriam
Teel, Jacquelyn

Donor -- \$50 to \$99

Anderson, James & Janet
Ardell, Elizabeth
Bear Creek Genealogical Society
Bohnstedt, Charles & Nancy
Brazosport Genealogical Society
Calvin, Donald & Sharri
Carlson, Johnnye
Cho-Yeh Camp & Conf Center
Cochran, Pat
Cowen, Joy
Daniel, Karen
Dusek, Ruby
Fay, Mary S

Ferns, C Kipp & Jerre
Gay, Suzanne
Gordon, Gene & Robert
Gregory, Peggy
Grimes, William & Ardath
Hester, Jeane
Holtsmith, Robert
Linsenhayer, Penny
Marburger, Patricia
Martin, Diana
McCants, Sheran
McNutt, R L
Nurdyke, Deborah S

Peterson, Joyce
Pippert, Elvin
Pusch, Donald E.
Russell, James & Lois Russell
Salmen, Fred & Janel
Samples, Jean A
Sasseman, James & Barbara
Schoppe, Robert & Vickie
Smith, Martha Lee
Taylor, Jeanette
West, Terry
Wolfe, Joseph

Contributor - \$1 to \$49

Abel, Linda
Alcorn, Maxine
Alderman, Sharon
Allen, Carolyn
Allen, Ellis
Anders, Mrs Alan
Anderson, Jacqueline
Anderson, Nancy
Andrews, Patsy
Avera, James
Ayer, W Terry
Ball, Mary Nell
Barrington, Betty
Beach, Judy
Beall, Bertha

Beaudoin, Dorothy
Bebermeyer, R Tibbits & R
Becker, James & Nancy
Beisser, Stephen & Norma Dolcater
Brennan, Walter
Briggs, Ken & Faye
Brock, Howard & Mary
Brown, Abner & Genevieve
Brown, Terry
Browning, Guston
Carroll, Mildred
Carter, Muriel
Cheek, Claude
Claffey, Harry & Helen

Col John Alson Chapter, Colonial
Dames of the 17th Century
Combe, Harry
Corley, Edwana
Croom, Emily A
Cullison, Edwin & Joellen
Davenport, Wallace E
Davis, Eugene
Dearman, Ronald & Dorothy
DeBarbarris, LaJuan
Doughty, Judith
Dunbar, Bessie
Durrett, Margaret
Ellermann, Melva
Etheredge, Morris & Jean

Contributor - \$1 to \$49 (continued)

Fritz, Rose Mary
Gage, Larry
Galveston Co Geneal Society
Giroir, Robert & Latricia
Gori, Ray G & Janet H
Goyette, Steven & Betta
Graham, Shirley J
Gulliver, Jo Anne
Hagen, Dorothy E
Hall, Cary L
Hamilton, Virgil & Elvie
Hansen, Beauford & Jane
Heffernan, J F & Norma
Hicks, John
Hicks, Phoebe
Hili, Virginia
Hoffman, Charles & Lucille
Holy, Judy
Houston Colony, Mayflower
Decendants
Itz, Howard
Jackson, Katherine
Jenkins, Jeanette
Johnson, Dianne J
Johnson, Lilas M
Kerekgyarto, William
Kettle, Theresa
King, Suzanne A
Klopp, Lucy
LaBostrie, Dorothy F
Ladwig, Katrina
Lassus, Laura Lee
LeCour, John
Lepelletier, Robert
Lindner, Galen & Laela Jo

Lloyd, Michael
Lucent Technologies
Madden, Bob
Marze, Brawley & Dotsy
May Foundation
McCarty, Carol A
McClung, Sharon
McNeese, Dennis
Metcalfe, Patricia
Metz, Jerry P
Minor, Dawn & Ralph
Moody, Joe & Phyllis
Morgan, Lola R
Moyer, Robert
Nat Soc New England Women,
Texas #160
Nelson, Kenneth & Sharon
Nicholls, Sue D
Odom, Betty
Odom, Lucille & Gymme Miele
Outlaw, Billy & Kathryn
Pace, Jerry & Jackie
Parks, James
Parks, Rosemary
Petersen, Deborah
Phillips, Joe & Patricia
Phillips, Mary Anne
Polish Geneal Soc of Texas
Porus, Martha
Potempa, Patricia
Prince, Mary Lou
Rathburn, Lloyd & Sharry
Reed, Ann
Richard, William & Barbara
Roberts, Gary B

Roberts, Lesbia W
Rose, Grace
Saulmon, Sharon
Schaus, Lola
Schulman, Stephanie
Seeger, Constance H
Shaner, Merlin & Marsha
Sharpe, Benjamin
Shephard, Norman & Johnnie K
Shepherd, Billie June
Shimek, Carolyn
Sikes, Bobbie
Simpson, Camille
Simpson, Margaret
Stavenhagen, Ernest
Tanner, Stephen & Karen
Taylor, Bonnie
Taylor, Clifton & Margaret
Thompson, Patricia
Thompson, Sybil A
Tinsley, Christene
Trexlar, Margaret
Tufts, Edward & Margaret
Untermeyer, Marquerite
Velasquez, Linda Sue
Venne, Carol
Vickers, Fred & Nancy
Voorhees, Nellie H
Wagenecht, Margaret
Wagner, Charles
Welsh, Walter & Patsy
White, Naomi
Wickwire, Kenneth & Amber
Wisnewski, Charlotte

1999 Gifts-in-Kind

*Clayton Library Friends wishes to acknowledge and thank the following organizations and individuals who donated books, periodicals or other materials to the library during 1999.**

Acker, Harold
Augusta Genealogical Society
Betsill, Jerry
Beverly, Trevia Wooster
Birnberger, Janet D & L A
Botsford, James
Brewer, Floyd
Brewer, Nancy Arrol
Bryant, Betty Huff
Bussemey, Emile A
Butler, Priscilla
Carr, Lawrence L
Carrol, Dorothy Howell
Cathcart, Raymond & Ann
Cochran, Patrick F
Cox, Elza B
Croom, Emily
Crowder, Tommy
Cullom, John H Sr

Cunningham, Eva
Daniel, Karen Stein
Dorroh, John
Dusek, Ruby
Dutt, Marie Kelso
Evans, Richard L
Fay, Mary Smith
Fitch, Catherine L
Greene Co Archives & Records Ctr
Hicks, Elizabeth Hitschke
Houston Genealogical Forum
Jackson, R J
Jordan, Vivian
Lunow, Diane
Meeks, Dewey & Bonnie
Miller, James
Moller, Fred J
Mottley, Margaret
Nat Genealogical Soc Library

Naumann, Joyce E
Neville Heritage Society
Pace, Jackie Ashley
Polish Genealogical Soc of Texas
Primary Source Media
Purcell, James O
Ramage, Martin D Jr
Shuffield, Betty Knight
Shuffield, Lynna Kay
Southwest Book Company
St Bartholomew Chapter Huguenot
Tantillo, Mary Ann
Taylor, Margaret
Toney, Virginia Simms
Tuck, Frances Partridge
Wall, Marcus H, Sr
Warren, James W
Wendt, Sally
Wolfe, Joseph P

* Cash donations and gifts-in-kind received by CLF after December 31, 1999 have been credited to 2000 contributions.