

Enriching the resources and facilities of  
**Clayton Library Center**  
for Genealogical Research

# THE CLF NEWSLETTER

*A Publication of Clayton Library Friends*

Volume XVII

July, 2003

Number 3

<http://www.hpl.lib.tx.us/clayton/clf.html>

## OFFICERS

David Bryan Singleton  
*President*

Paula Perkins Parke  
*1st Vice President*

Alfred Davis IV  
*2nd Vice President*

Jose O. Guerra, Jr  
*Secretary*

Donald E. Pusch  
*Treasurer*

## FIRST TERM DIRECTORS

Robert de Berardinis  
Alexander Perry (Sandy)  
Scott

David Lodge

## SECOND TERM DIRECTORS

Dickie K. (Dick) Warren  
Teri Hall Little  
Elizabeth Hicks

## CLF NEWSLETTER STAFF

**Editor:**  
David B. Singleton

**Design/Layout:**  
Dan Tidwell,  
Genesis Graphic Design  
281-403-9967

## CLAYTON LIBRARY FRIENDS

P. O. Box 271078  
Houston, Texas 77277-1078  
*Established 1987*

*Clayton Library Friends is a tax exempt, non-profit organization under IRS Code 501(c)(3). The sole purpose of CLF is to enrich the resources and facilities of the Clayton Library Center for Genealogy Research.*

## President's Message

The genealogy community is alive and well and very busy in the greater Houston area right now. The Clayton Library Friends is a proud partner to all of our sister organizations and for that reason we have put a list of the ones we know about in this newsletter. Take a look at the list and I will bet you will find one that interests you. Don't forget about the Friends of the Texas Room, a new organization dedicated to the support of the Julia B. Ideson building and our wonderful Texas Room. You can contact the organization at P.O. Box 27827, Houston, Texas 77227-7827.

I received a nice letter recently from Mary J. Whigham the Vice President of the Washington County Genealogical Society. She thanked our organization for sending board member Robert de Berardinis to their June seminar. Robert was a presenter with former CLF speaker Charles Gardes and Ms. Whigham congratulated us for being associated with "such talented individuals." Robert and Charles evidently gave a few "ads" about The Clayton Library Friends and

*continued on page 2*

## French Ship's Logs Now at Clayton

*by Don Pusch*

Recently, the Friends acquired for Clayton Library microfilm of the Library of Congress's Louisiana Colonial Records Project (discussed on page 6 in this newsletter). A significant portion of that microfilm contains seventeenth- and eighteenth-century French ships' logs from the archival sub-series Marine 4 JJ (*Journaux de bord*), part of the holdings of the French Archives nationales. The entire Marine 4 JJ collection contains thousands of ships' logs; however, the Library of Congress's copying program selected for filming only those thought to be of the most interest for the history of the French and Spanish provinces of Louisiana and the United States, about 245 logs spanning the period 1669 to 1793. These include voyages from France to various destinations in North America, including Quebec, Ile Royale (the French colony that encompassed present-day Cape Breton and Prince Edward Island),

*continued on page 3*

The Consul General of Spain in Houston, Señor Julio Montesino, will be present at the 2003 CLF Seminar to receive the thanks of CLF President David Singleton and the CLF board. Without the generous assistance for two years of Consul General Montesino, his predecessor, Consul General Manuel Piñeiro, and their staffs, Clayton Library Friends would never have been able to execute the requisite agreements to purchase all of the microfilmed portion of the Cuban Papers or *Papeles procedentes de la isla de Cuba* from the Archivo General de las Indias in Seville. Clayton Library is the only library outside of Spain to have purchased all of the microfilmed portion of the Cuban Papers.





# Clayton Library Friends Financial Report

Balance Sheet  
As of 06/30/03

Acct	Balance
<b>ASSETS</b>	
Cash and Bank Accounts	
Beal Bank CD.....	0 -
IBC Commercial Savings .....	50,237.83
ICB Money Market .....	0 -
Postal Service Bulk Mail Acc.....	433.69
Wells Fargo Checking.....	25,835.37
Wells Fargo Market Rate Acc.....	19,885.67
Woodforest CD.....	100,000.00
TOTAL Cash and Bank Accounts.....	196,392.56
<b>TOTAL ASSETS</b> .....	<b>196,392.56</b>
<b>LIABILITIES &amp; EQUITY</b>	
LIABILITIES.....	0 -
EQUITY .....	196,392.56
<b>TOTAL LIABILITIES &amp; EQUITY</b> .....	<b>196,392.56</b>

## Cash Flow Report 01/01/03 Through 06/30/03

Category	Description	Amounts
<b>INFLOWS</b>		
411 - Unrestricted Gifts.....		6,233.00
412 - Rest'd - non Endowment .....		11,390.45
422 - 2003 Dues.....		3,610.00
423 - 2004 Prepaid Dues.....		45.00
430 - Fund Raising Income .....		24.00
450 - Interest - Endowment .....		3,481.52
460 - Other Income .....		11,235.19
<b>TOTAL INFLOWS</b> .....		<b>36,019.16</b>
<b>OUTFLOWS</b>		
510 - Library Purchases .....		44,648.34
530 - Program Printing & Mailing.....		1,558.55
540 - Meeting & Seminar Expns .....		22.73
550 - Misc Prog Expns.....		14.80
630 - Legal Services.....		10.00
640 - Bank Charges.....		100.75
650 - M&G Printing & Mailing.....		138.85
660 - Office Supplies.....		186.19
670 - P.O. Box Rental .....		126.00
680 - Misc M&G Expenses .....		111.31
710 - Fund Raising Printg & Mail.....		340.23
720 - Misc Fund Raising Expns .....		133.03
<b>TOTAL OUTFLOWS</b> .....		<b>47,390.78</b>
<b>OVERALL TOTAL</b> .....		<b>11,371.62</b>

Donald E. Pusch  
Treasurer

## President's Message Continued from page 1

Ms. Whigham indicated that we would be seeing some new members as a result of those ads. She also asked me to thank Liz Hicks for her recommendation of Robert who recommended Charles. I also received a letter from the Better Business Bureau of Houston with their list of charities that meet their Standards for Charitable Accountability and the Clayton Library Friends is a part of that list.

Don't forget about the fall seminar that will be held in the auditorium of the Julia Ideson Building of the Houston Public Library on September 27, 2003. The Clayton Library Friends has been involved in genealogy seminars for several years holding basic and intermediate classes for our membership. This seminar continues this CLF tradition. Our main platform speaker is Professor Paul E. Hoffman from LSU. He is recognized as one of America's leading Gulf Coast historians. See the seminar notice on page 7 for more details. We have limited seating capacity so be sure to sign up early.

You will also see in this issue of the newsletter a brief article about our volunteer program. This volunteer program is a model that is being replicated because of what we have been able to accomplish. We have been very successful in "stepping up to the plate" to do what we promised the Houston City Council last year. We have actually gone way beyond that and we intend to keep growing. Thank so very much for your help, we love you.

*DB Singleton*

## Ships, Relatives, Ancestors and Friends

By David Bryan Singleton

Last month my wife Maureen was invited to speak at a reunion for the crew members of the USS *Shields* in Reno Nevada. The ship had been named for a naval officer who served in the War of 1812 and a direct ancestor of Maureen. Her "cousin" Julia who has become a wonderful friend had also been asked to speak because she had been at the ship's launch in Washington in 1944. I was able to sit and visit with several men who served as an original crew member and listen to tales and stories and adventures they had during WWII. Julia spoke of the day of the launch when she was eight years old and Maureen spoke about the ship's namesake, Thomas Shields. It was a magnificent experience for all of us and we were involved because of work and interest in this wonderful hobby called genealogy.



## French Ship's Logs Now at Clayton *Continued from page 1*

Acadia (parts of present-day Nova Scotia and New Brunswick), New England, Newfoundland, the Louisiana-Mississippi Gulf Coast, Florida, and various Caribbean islands including Saint Domingue, Martinique, Sainte Croix, Jamaica, Antigua, Guadeloupe, and Grenada.

A survey of the Marine 4 JJ microfilm in this collection shows that it includes some 70 logs of ships traveling to the Louisiana-Mississippi coast, 47 to Acadia and Ile Royale, 34 to Quebec, and over 90 to various locations in the Caribbean. There are even a small number of logs for voyages to such places as New York, Delaware, Portsmouth (New Hampshire), and Nantucket. In general, the voyages covered in these logs begin and end at ports in France; however, there are some for voyages between various French colonies or for one-way voyages between the colonies

France. Some logs describe "round-robin" voyages from France to several different colonial destinations, and there are a few logs of ships engaged in the slave trade between the coast of Africa and Louisiana or the various French colonies of the Caribbean.

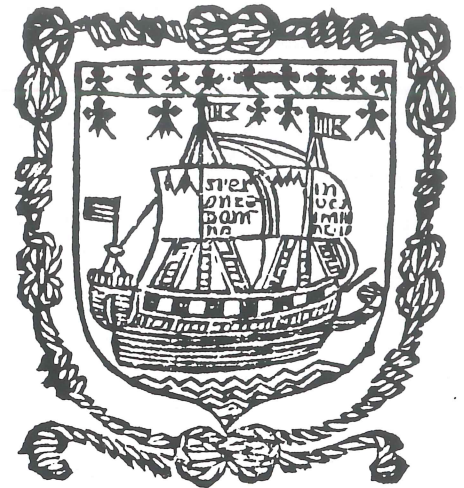
Ships logs of the seventeenth and eighteenth centuries have never been considered important sources for genealogical data, and they certainly do not contain anything akin to vital records. Their significance lies in the fact that they are first-hand narratives, narratives that not only include navigational data but also information about what took place during the voyage. One finds in these logs many bits of information about the places the ship visited, events observed, the people onboard, or the various people who may have come in contact with the ship. A good

example of this is the log of the King's transport ship *Rhinocéros*, which arrived at New Orleans in July

1752. On the passage between the mouth of the Mississippi River and the city, the ship's log records the various habitations encountered along the river, including those of Danois, Robert, Laloire, the Faissante brothers, and Governor Vaudreuil. During the period when the *Rhinocéros* was moored on the New Orleans waterfront, the log records the names of other ships and their captains coming and going from the port. Another example is the log of the King's transport ship *Fortune*, which visited New Orleans in the fall of 1758. We find recorded there the debarkation of the newly arrived *ordonnateur* (chief financial officer) Vincent de Rochemore and his wife. Also mentioned in the log is the port captain, Jacques Livaudais, and one of the local river pilots, Louis Roquigny, both of whom worked with the *Fortune's* captain in getting the ship lightened sufficiently to sail through East Pass near the Balize pilot station.

Although passenger lists are rarely encountered in these logs, one will occasionally find in them listings referred to as *états majeurs*, rosters of the naval officers serving onboard the ship and, if any were present, the officers of troop detachments being transported on the ship. This is the case, for example, with the 1749 log of the *Atalante* (4 JJ 22, journal 66), the 1788 log of the *Poulette* (4 JJ 26, journal 102), and the 1788 log of the *Truite* (4 JJ 19, journal 83).

Not all of the items in the Marine 4 JJ collection are true ships' logs. For whatever reason, this sub-series also includes a few private journals, ones that focus on observed events and not on navigational matters. The best example of this is Bénard de La Harpe's journal (Marine 4 JJ 14, journal 15), which contains La Harpe's observations on the colony of Louisiana made during an intended voyage to Matagorda Bay



(then called Saint Bernard Bay) on the Texas coast in 1721. This journal, which is the original source for many subsequently published versions, can now be directly accessed at Clayton Library in the original French!\* Another example of these type journals is that of Le Sueur (Marine 4 JJ 14, journal 4). In the form of a letter, Le Sueur's journal records observations made during an excursion up the Mississippi River, ca. 1700.

Also found in this sub-series are the logs of several important voyages of discovery and early exploration. Foremost among these are the two of d'Iberville: the first for a voyage from Léogâne (a seaport near Port au Prince, Haiti) to a point near modern-day Biloxi, Mississippi in 1698 (Marine 4 JJ 14, journal 3); and the second for a voyage from Cap François (Cape Haïtien, Haiti) to the Mississippi and into the interior of Louisiana in 1700 (Marine 4 JJ 14, journal 4).

As mentioned previously, there are also logs of slave ships in the sub-series. One such log (Marine 4 JJ 15, journal 21) is for the ship *Courrier de Bourbon* of Lorient, which, in June and July of 1723, picked up several hundred slaves at two locations along the coast of Senegal and then transported them, via Saint Domingue, to Biloxi and New

*Continued on page 4*





## French Ship's Logs Now at Clayton

Continued from page 3

Orleans. Another example is the log (Marine 4 JJ 16, journal 35) for the slave ship *Galathée*, which chronicles a horrifying voyage that took place in 1728–1729. In October 1728, the *Galathée* took onboard 400 enslaved Africans at the infamous slave station on the island of Gorée off the coast of Senegal. Sickness set in among both the slaves and the crew before the ship reached Saint Domingue and took a terrible toll on the Africans during the trek from Saint Domingue to Louisiana. Each day the log records one, two, sometime three or four slaves dying and being thrown into the sea. By the time the *Galathée* reached the Belize pilot station on 18 January 1729, some 127 Africans had died. Thirteen more died during the ship's ascent of the river to New Orleans. This log also names many of the crew members who died and contains a list of replacement sailors taken onboard in Saint Domingue.

There are very few finding aids for the Marine 4 JJ logs of the Louisiana Colonial Records Project, and no comprehensive indexes exist. The principal aid for using the collection is George Bourgin and Étienne Taillemite, *Inventaire des Archives de la Marine, Service hydrographique, sous-séries 4 JJ (Journaux de bord)* (Paris: Imprimerie nationale, 1963). This work, available at Clayton, contains a listing of all the logs in the Marine 4 JJ sub-series, those filmed as part of the Louisiana Colonial Records Project as well as all others. In general, entries in the *Inventaire* include the name of the ship, the name of the captain, the place of embarkation, the destination(s), and the year date(s) of the voyage. If the log or journal was created under the authority of someone other than the captain (for example, another of the ship's officers), that information is included, if known. The names of the ships and the captains are indexed in the back of the text. To augment the *Inventaire*, Clayton Library Friends has prepared a notebook finding aid that gives the microfilm reel number reference for each of the logs. Look for this on the finding aids shelf in the microprint area on the second floor of the library.

\* Clayton also owns an annotated English translation of this journal. Jean-Baptiste Bénard de la Harpe, *Journal historique de l'établissement des français à la Louisiane* [Historical Journal of the Settlement of the French in Louisiana], Glenn R. Conrad, ed., Virginia Koenig and Joan Cain, trans., USL History Series, vol. 3 (Lafayette: USL, 1971). (076.3 L 185 LA)

## TEXAS BORDER CROSSINGS NOW ON RECORD

An historic agreement was reached between the Hispanic Genealogical Society of Houston and the Clayton Library Friends for the joint purchase to complete Clayton Library's collection of the microfilmed records of the border crossings and immigration into Texas from the U.S. National Archives. This purchase came to \$7,616.

The joint purchase agreement was devised by CLF Secretary and Hispanic Genealogical Society President Joe Guerra and ratified by the CLF board in May. It was originally to be a three-year plan, but the Hispanic Genealogical Society subsequently decided to donate their entire portion, \$3,808, in June. All of the microfilm should be at Clayton by August.

The importance of these border crossings is not limited to Hispanic researchers, but also includes other immigrants entering the United States during the period between World War I and World War II, especially Austrian and other central European Jews after 1937.

The new microfilm collection consists of the following (descriptions are from NARA catalogue):

A 3365, *Lists of Aliens Arriving at Brownsville, Del Rio, Eagle Pass, El Paso, Laredo, Presidio, Rio Grande City, and Roma, Texas, May 1903–June 1909, and at Aros Ranch, Douglas, Lochiel, Naco, and Nogales, Arizona, July 1906–December 1910* (5 rolls), contains lists arranged chronologically by quarter-year, then by port of arrival. Arrivals at Brownsville, July 1906–June 1909, are on rolls 1 through

M 756, *Applications for Nonresident Alien's Border Crossing Identification Cards Made at El Paso, Texas, ca. July 1945–December 1952* (62 rolls), contains over 150,000 alphabetically arranged applications, made primarily between 1948 and 1952, with some dating as early as 1945.

M 1502, *Statistical and Nonstatistical Manifests of Alien Arrivals at Brownsville, Texas, February 1905–June 1953, and Related Indexes* (40 rolls), contains over 217,000 arrivals in four record series: (1) index to statistical manifests interfiled with non-statistical manifests, Feb. 1905–Nov. 1929; (2) index to statistical manifests, Dec. 1929–Mar. 1952; (3) statistical manifests, Feb. 1905–Mar. 1952; and (4) non-statistical manifests, Feb. 1929–June 1953. Series 1, 2, and 4 are alphabetically arranged. Series 3 is chronologically arranged but is indexed by series 1 and 2.

M 1514, *Indexes of vessels arriving at Brownsville, Texas, 1935–1955; Houston, TX, 1948–1954; and at Port Arthur and Beaumont, TX and Lake Charles, LA, 1908–1954* (1 roll), contains enumerated lists for all vessels for these ports.

M 1757, *Manifests of Aliens Granted Temporary Admission at El Paso, Texas, ca. July 1924–1954* (97 rolls), contains more than 245,000 alphabetically arranged manifests. Fabens, Texas.

M 1768, *Alphabetical Card Manifests of Alien Arrivals at Fabens, Texas, July 1924–1954* (7 rolls), contains over 13,000 arrivals in three alphabetically-arranged record series: (1) aliens admitted for temporary visits, July 1, 1924–1954; (2) aliens admitted for permanent residence, July 1, 1924–July 27, 1952; and (3) applications for nonresident alien's border crossing identification cards, ca. 1945–Dec. 24, 1952.

M 1849, *Manifests of Alien Arrivals at Yseleta, Texas, 1924–1954*

Continued on page 5



## Texas Border Crossings *Continued from page 4*



*Left to right: David Garza; Cris Garza, Jose Guerra, Baldemar Silva*

(7 rolls), contains over 13,000 arrivals in three alphabetically arranged record series: (1) statistical and permanent manifests, July 1, 1924–July 27, 1952; (2) temporary manifests, 1924–1954; (3) applications for nonresident alien's border crossing identification cards, ca. 1945–Dec. 24, 1952.

M 1773, *Statistical Manifests of Alien Arrivals by Airplane at Antonio, Texas, May 17, 1944–March 1952* (1 roll), contains 3,100 alphabetically arranged records.

Clayton Library already had the following microfilm:

M 1503, *Index and Manifests of Alien Arrivals at Roma, Texas, March 1928–May 1955* (5 rolls), contains over 30,000 alien arrivals in five record series: (1) index to statistical manifests, Aug. 13, 1929–Aug. 19, 1954; (2) statistical and non-statistical manifests, Mar. 1, 1928–Nov. 30, 1929; (3) statistical manifests, Aug. 13, 1929–Aug. 19, 1954; (4) non-statistical and temporary manifests, Mar. 1, 1928–Oct. 1, 1929; and (5) non-statistical and temporary manifests, Mar. 1, 1928–May 30, 1955. Series 1, 2, 4, and 5 are alphabetically arranged, while series 3 is chronologically arranged and is indexed by series 1.

M 1754, *Nonstatistical Manifests and Statistical Index Cards of Aliens Arriving at Eagle Pass, Texas, June 1905–November 1929* (27 rolls), contains over 150,000 alphabetically arranged records. The statistical index cards serve as a finding aid to statistical manifests in M1755, rolls 1-27.

M 1755, *Permanent and Statistical Manifests of Alien Arrivals at Eagle Pass, Texas, June 1905–June 1953* (30 rolls), is chronologically arranged but is indexed by M1754 (for June 1905–Nov. 1929) and by M2040 (for Dec. 1929–June 1953).

M 1766, *Alphabetical Card Manifests of Alien Arrivals at Fort Hancock, Texas, 1924–1954* (2 rolls), contains over 4,400 arrivals in two alphabetically-arranged record series: (1) aliens admitted for temporary visits, 1924–1954, with most arrivals during 1931–1944, and (2) applications for nonresident alien's border crossing identification cards, ca. 1945–Dec. 24, 1952.

M 1770, *Indexes and Manifests of Alien Arrivals at Rio Grande City, Texas, November 1908–May 1955* (6 rolls), contains over 28,000 arrivals in seven record series: (1) index to statistical

manifests, Nov. 16, 1908–Nov. 30, 1929; (2) index to statistical manifests, Dec. 1, 1929–Jan. 15, 1952; (3) statistical manifests, Nov. 16, 1908–June 28, 1926; (4) statistical manifests, July 1, 1926–Jan. 15, 1952; (5) non-statistical manifests, Mar. 22, 1916–Dec. 31, 1928; (6) non-statistical manifests, Jan. 1, 1929–June 30, 1940; and (7) non-statistical manifests, July 1, 1940–May 30, 1955. Series 1, 2, 5, 6, and 7 are alphabetically arranged. Series 3 and 4 are chronologically arranged but indexed by series 1 and 2.

M 1771, *Alphabetical Manifests of Non-Mexican Aliens Granted Temporary Admission at Laredo, Texas, December 1, 1929–April 8, 1955* (5 rolls), contains over 31,000 alphabetically arranged manifests.

M 1772, *Manifests of Aliens Granted Temporary Admission at Laredo, Texas, December 1, 1929–April 8, 1955* (66 rolls), contains more than 550,000 alphabetically arranged card manifests. Some U.S. citizen arrivals and some records of exclusion of aliens are also included.

M 1851, *Index and Manifests of Alien Arrivals at Progreso/Thayer, Texas, October 1928–May 1955* (6 rolls), contains over 29,000 arrivals in three record series: (1) index to statistical manifests, Oct. 6, 1928–Nov. 19, 1952; (2) statistical manifests, Oct. 6, 1928–Nov. 19, 1952; and (3) non-statistical and temporary manifests, Oct. 1928–May 27, 1955. Series 1 and 3 are alphabetically arranged. Series 2 is chronologically arranged but indexed by series 1.

M 2008, *Lists of Aliens Arriving at Laredo, Texas, from July 1903 to June 1907, via the Mexican National Railroad or the Laredo Foot Bridge* (1 roll), contains unindexed chronologically arranged records.

M 2024, *Indexes and Manifests of Alien Arrivals at Zapata, Texas, August 1923–September 1953* (2 rolls), contains six record series: (1) index to statistical manifests, Dec. 1, 1929–June 7, 1950; (2) statistical manifests, Aug. 18, 1923–Mar. 27, 1926; (3) statistical manifests, Mar. 28, 1926–June 7, 1950; (4) non-statistical and statistical manifests, Aug. 18, 1923–Nov. 30, 1929; (5) non-statistical and temporary manifests, Apr. 25, 1929–Sept. 10, 1952; and (6) applications for nonresident alien's border crossing identification cards, Apr. 29, 1945–Sept. 15, 1953. Series 1, 4, 5, and 6 are alphabetically arranged. Series 2 and 3 are chronologically arranged, but most of series 3 is indexed by series 1.

M 2040, *Index to Manifests of Permanent and Statistical Arrivals at Eagle Pass, Texas, December 1, 1929–June 1953* (2 rolls), contains over 9,300 alphabetically-arranged index cards that serve as a finding aid to statistical manifests in M1755, rolls 27-30.

M 2041, *Temporary and Non-statistical Manifests of Aliens Arriving at Eagle Pass, Texas, July 1928–June 1953* (14 rolls), contains over 111,000 arrivals in three record series: (1) July 1, 1928–Mar. 21, 1929; (2) Mar. 22, 1929–June 30, 1940; and (3) July 1, 1940–June 1953. Series 1 is chronologically arranged; series 2 and 3 are alphabetically arranged.





## VOLUNTEERS RECOGNIZED

Clayton Library Friends volunteers were honored by Houston Public Library Director Barbara Gubbin at a ceremony at the downtown branch of Houston Public Library. In fact, Clayton had the largest number of volunteers of any branch, including the downtown branch, in the entire HPL system. Honorees of the 50 volunteer hours awards receive a signed certificate of achievement, a HPL pocket calendar and note book, HPL book marks, and HPL note pads. Honorees of 300 volunteer hours (cumulative) awards receive in addition a HPL personalized "CLF Volunteer" name badge. Honorees of 500 volunteer hours (cumulative) awards receive a special HPL plaque. CLF director Robert de Berardinis was recognized for having the most volunteer hours in the HPL system for 2002.

Those who earned HPL 50 volunteer hour awards were (underlined names indicate the person was present at ceremony to receive award):

Don Versluys, 50 hours, 50 minutes;  
George W. Wilson, 54 hours, 45 minutes;  
 Harry Jarvis, 55 hours, 30 minutes;  
 Betsy Pusey, 56 hours 15 minutes;  
Florence H. Parks, 60 hours, 30 minutes;  
 Eva J. Cunningham, 61 hours 15 minutes;  
 Norma Holley Eriksen, 66 hours, 20 minutes;  
 Gayle L. Workman, 81 hours;  
 Stephanie Struby, 93 hours;  
Dorothy Carroll, 104 hours;  
 Tom Lyon, 107 hours, 15 minutes;  
 CLF Director Elizabeth Nitschke Hicks,  
 146 hours, 30 minutes.

Those who earned HPL 500 volunteer hour awards were:

CLF Director Robert de Berardinis, 1335 hours.



(Left to right) HPL Director Barbara Gubbin, CLF Director Elizabeth "Liz" Nitschke Hicks, CLF Volunteer Dorothy Carroll, CLF Director Robert de Berardinis, CLF Volunteer Florence H. Parks, CLF Volunteer George W. Wilson, and HPL Manager of Volunteer Services Marlena Mitchell.

## WHAT'S New?

By Robert de Berardinis

Since the last newsletter, over 1,200 rolls of microfilm and a large number of new books have arrived at Clayton Library thanks to the generous donations to Clayton Library Friends. Due to the nearly 20% decrease in the books and materials budget for Clayton Library in the City of Houston FY 2004 (ends June 30, 2004), CLF member donations, eligible for tax deductibility, become even more important.

The Hamburg Passenger lists or *Auswandererlisten* complete from 1850 to 1910 along with all the direct and indirect indexes are in the microfilm drawers. These represent all of the embarkations in the port of Hamburg for travel to the United States. Not just Germans, but immigrants traveling from Russia, Scandinavia, and central Europe can be found on these important immigration lists. There are several ways to access the passenger names on these lists and the Clayton Staff will be waiting to assist researchers.

The Louisiana Colonial Records Project microfilm is also a new addition. When the Cuban Papers, the French colonial correspondence papers (also called "the C 13" papers), the remainder of French colonial ship passenger lists, and French colonial pension records arrive later this summer and fall, researchers of the colonial and territorial Gulf Coast, Floridas, Mississippi Valley, and Texas will have access to powerful new tools which no other library in the world has collected, including the Library of Congress.

The LCRP is in French, but Clayton Library Friends has devised a 110 page guide for accessing the documents in the collection called, "*The Official Clayton Library Friends Finding Aid for the Microform Edition of the Library of Congress' Louisiana Colonial Records Project.*" The CLF guide includes a list to a number of translated documents found in the LCRP to assist the French-challenged. It also has a reel-by-reel calendar of contents as well as brief English language summaries of the documents or maps on each reel. Additionally, there is a list of published articles (available at Clayton) that show researchers how to use this series.

Among the documents are the *état civils* or abstracted copies of baptisms, marriages, and funerals for New Orleans, Biloxi, and Illinois. There is a 64 page summary of passengers sent to the province of Louisiana from Lorient by the Company of the Indies from 1717-1724. About 1/3rd of the muster rolls and pay lists for the colonial troops are also contained in the collection. The military records are

Continued on page 9

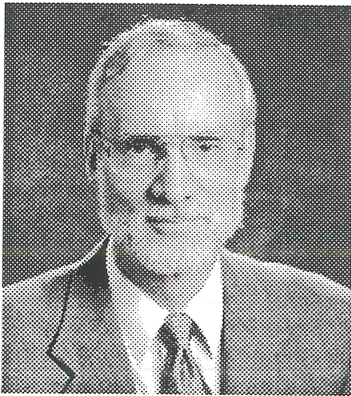


Clayton Library Friends and the William A. and Madeline Welder Smith Foundation are proud to sponsor the first C. M. McGee Memorial Seminar celebrating the gift to Clayton Library of the largest collection outside of Spain of the *Papeles Procedentes de la Isla de Cuba* or "Cuban Papers."

## THE CUBAN PAPERS SEMINAR

How to use the largest single collection of source material for Gulf Coast, Mississippi Valley, Texas, and southeastern United States, 1700–1820

The "Cuban Papers" Are  $\frac{1}{3}$  English,  $\frac{1}{3}$  French, and  $\frac{1}{3}$  Spanish  
Saturday, September 27, 2003 in the auditorium of the Julia Ideson Building  
of Houston Public Library, Downtown Location, 500 McKinney, Houston



**9:30 – 11:30 am: Prof. Paul E. Hoffman** from LSU,  
Paul W. and Nancy W. Murrill Distinguished Professor in History,  
**Topic:** Getting to Know the 'Cuban Papers'

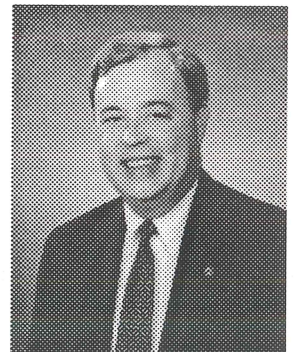
*Learn from America's foremost scholar of the Cuban Papers!*

Author of seven books, innumerable scholarly articles, and anthology chapters in both English and Spanish, including *A New Andalucia and a Way to the Orient: The American Southeast During the Sixteenth Century*, winner of the 1991 Francis Parkman prize from the Society of American Historians and *Florida's Frontiers*, the 2002 prize winner from the Gulf Coast Historical Association. Hoffman has also authored a Spanish-language history of Louisiana, *Luisiana*.

**1:00 – 3:00 pm: Robert de Berardinis**

**Topics:** "Understanding French Documents in the Cuban Papers," "Uses with Clayton's collection of French Archives Microfilm," and "Source Material for the Deep South (Mississippi, Alabama, and western Georgia) during the American Territorial Period."

Specializing in French language and Deep South genealogy, de Berardinis has published over 70 articles; has one book in print, *French Superior Council Records of Louisiana: 1717–1763* with three more books in publication, including a dual French-English book on St. Christophe (St. Kitts).



☞ **Free to each contributor of \$15 or more to CLF Legajo Fund by Aug. 1.** ☞

☞ **Free to each contributor of \$20 after Aug. 1. Seating limited to 120. No refunds** ☞

\$2 parking (additional) if paid with donation by Aug. 1, \$3 afterwards – Park in garage at 1100 Smith St. and get your parking token at seminar entry. For more info, a map, or list of downtown restaurants open on Saturday, contact:

**Dick Warren** (281) 461-1472; [dick@merlins-web.com](mailto:dick@merlins-web.com) • **Don Pusch** (281) 326-3278; [pusch@ghg.net](mailto:pusch@ghg.net)

Make checks payable to "CLF—Legajo Fund" (*may be tax deductible, CLF is a 501.c.3 tax-exempt corp.*)

Name: \_\_\_\_\_ Phone: (\_\_\_\_) \_\_\_\_\_

Address: \_\_\_\_\_ E-mail: \_\_\_\_\_

City: \_\_\_\_\_ State: \_\_\_\_\_ Zip Code: \_\_\_\_\_

A Gift from: \_\_\_\_\_ in ☐ honor of \_\_\_\_\_

☐ memory of \_\_\_\_\_

☐ \$2 or \$3 parking included

Mail to: Seminar Chairman • Clayton Library Friends • P.O. Box 271078 • Houston, TX 77277-1078





# GENEALOGICAL SOCIETIES

## Bay Area Genealogical Society

Meets: Monthly at 5:00 pm on last Sunday  
Where: Great Room,

University Baptist Church,  
16106 Middlebrook Drive,  
Houston, TX 77059

Contact: Carolyn Hellen, President  
281-486-0406,  
erhellen@att.net, or  
P.O. Box 891447  
Houston, TX 77289-1447

Dues: \$20/individual, \$25/family; yr.

Newsletter: Yes

Web site: <http://www.TxBayAreaGen.org>

## Baytown Genealogy Society

Meets: Monthly at 10 am on 2<sup>nd</sup> Monday

Where: Baytown Gen. Society Library  
5203 Decker Dr.,  
Pasadena, TX 77520-1422, or  
P.O. Box 2486

Contact: Herberta Mask, President  
(281) 422-4950,  
mask\_b1@juno.com, or  
the library  
(281) 424-8388

Dues: \$10/individual, \$15/family; yr.

Newsletter: Yes

Web site: <http://www.baytowngenealogyresearchlibrary.org>

## Chaparral Genealogical Society

Meets: Monthly at 10 am on 1<sup>st</sup> Thursday

Where: Second Floor Meeting Room,  
Klein Bank,  
28201 Tomball Parkway at Hooper,  
Tomball, TX 77301

Contact: Chaparral Gen. Society Library,  
Mondays-Wednesdays, 10 am-2 pm  
Most Saturdays, 10 am-2 pm  
310 North Live Oak,  
(281) 516-7417, or  
Teri Hall-Little, President,  
(281) 379-1645,  
tlittle840@aol.com, or  
P.O. Box 606,  
Tomball, TX 77377-0606

Dues: \$12/individual or \$17/family; yr.

Newsletter: Yes

Web site: <http://www.chaparralgensoc.org>

## The Cherokee Cultural Society of Houston

Meets: Monthly at 7:00 pm on 1<sup>st</sup> Thursday,  
except July

Where: Houston Regional HIV/AIDS  
Resource Group  
Conference Room  
500 Lovett St.

Contact: Vicki Henrichs, Vice-President,  
(713) 974-3945, or  
Cherokee Cultural Society  
4407 Rose Street  
Houston, TX 77007

Taped message: 713 866-4085

Dues: \$35 family membership, annually

Newsletter: Yes

Web site: [www.cherokeehouston.org](http://www.cherokeehouston.org)

## Galveston County Genealogical Society

Meets: Monthly at 7:00 pm on 1<sup>st</sup> Thursday

Where: Wortham Auditorium,  
Rosenberg Library,  
2310 Sealy,  
Galveston, TX 77550

Contact: Betty Ryman  
(409) 945-7055, or  
Connie Taube  
(281) 992-4067, or  
P.O. Box 1141,  
Galveston, TX 77553-1141

Dues: \$7/individual, \$10/family; yr.

Newsletter: Yes

Web site: <http://www.rootsweb.com/~txgalves/gegs.htm>

## Greater Houston Jewish Genealogy Society

Meets: Monthly at 7 pm on 1<sup>st</sup> Thursday

Where: Seven Acres Jewish Senior Care  
6200 N. Braeswood  
Houston

Contact: Irving Oppman, President,  
(713) 728-9538,  
aoppman@houston.rr.com

Dues: \$18/individual, \$20/family

Newsletter: yes

Website: <http://www.texsys.com/ghjgs/>

## Harris County Genealogical Society

Meets: Monthly at 7:30 pm on 2<sup>nd</sup> Thursday,  
In June, July, & August, only  
informal meetings

Where: Meeting Room (next to Mall office)  
Pasadena Town Square Mall,  
Harris and Pasadena Blvd.,  
Pasadena, TX

Contact: Bobby Oglethorpe, President  
(713) 472-6089,  
bobbyoglethorpe@aol.com, or  
Tommie Burns,  
(713) 472-4703,  
leburns@hal-pc.org, or  
P.O. Box 391  
Pasadena, TX 77501-0391

Dues: \$15/individual, \$20/family; yr.

Newsletter: Yes

Web site: <http://www.hegs.org>

## Hispanic Genealogical Society

Meets: Monthly at 6:30 pm on 3<sup>rd</sup> Wed.

Where: Loma Linda Restaurant  
2111 Telephone Road,  
Houston

Contact: Joe Guerra, President  
(281) 440-9142,  
joguerra@hispanicgs.com, or  
P.O. Box 231271  
Houston, TX 77223-1271

Dues: \$25/family; yr.

Newsletter: Yes

Web site: <http://www.hispanicgs.com>

## Houston Genealogical Forum

Meets: Monthly at 9:30 am on 1<sup>st</sup> Saturday

Where: Bayland Community Center,  
6400 Bissonnet,  
Houston

Contact: Genealine  
(713) 968-9750, or  
Gloria Russell, President  
President@hgftx.org, or  
P.O. Box 271466,  
Houston, TX 77277-1466

Dues: \$18/individual, \$25/family; yr.

Newsletter: Yes

Web site: <http://www.rootsweb.com/~txharri2/>

## The Humble Area Genealogical Society

Meets: Monthly at 7:15 pm on 2<sup>nd</sup> Monday,  
except June, July, and August,

Where: Teaching Theater  
Kingwood College

Contact: Martha Els, President  
(281) 446-1151, or  
Julia@hal-pc.org  
P.O. Box 2723  
Humble, TX 77347-2723

Dues: \$10/individual, \$12/family; yr.

Newsletter: yes

Website: <http://www.rootsweb.com/~txthags/>

## Greater Houston Jewish Genealogy Society

Meets: Monthly at 7 pm on 1<sup>st</sup> Thursday

Where: Seven Acres Jewish Senior Care  
6200 N. Braeswood

Houston

Contact: Irving Oppman, President,  
(713) 728-9538,  
aoppman@houston.rr.com

Dues: \$18/individual, \$20/family

Newsletter: yes

Website: <http://www.texsys.com/ghjgs/>

## League City Genealogical Society

Meets: Monthly at 7 pm on 2<sup>nd</sup> Monday

Where: League City Methodist Church  
1411 W. Main  
League City, TX 77573

Contact: Dean Glenn, President,  
(281) 332-3225,  
dglenn@hal-pc.org

Dues: none

Newsletter: no

Website: no

## Montgomery County Genealogical and Historical Society

Meets: Monthly at 6 pm on 1<sup>st</sup> Monday

Where: Montgomery Co. Public Library,  
104 I-45 North,  
Conroe, TX 77301

Contact: Montgomery Co. G. & H. Society  
(936) 756-8625,  
meghs@yahoo.com, or  
221 N. Thompson,  
Conroe, TX , or  
P.O. Box 867,  
Conroe, TX 77305-0867

Dues: \$25/family; yr.

Newsletter: Yes

Web site: <http://www.rootsweb.com/~txmeghs/>

## Polish Genealogical Society of Texas

Meets: Quarterly, check website or phone

Where: Tracy Gee Community Center  
3599 Westcenter Dr.  
Houston

Contact: Pete Wessner, President  
(281) 448-5860,  
pwess10@aol.com

Dues: \$20/individual, \$30/family, yr.

Newsletter: Yes

Website: <http://www.pgst.org>

## Texas City Ancestry Searchers

Meets: Monthly at 1:00 pm on 3<sup>rd</sup> Wed.

Where: Holland Conference Room,  
Moore Memorial Public Library,  
1701 9th Ave. N.,  
Texas City, TX 77590

Contact: Elaine Mason, President  
(409) 945-2149  
bemason@prodigy.net, or  
P.O. Box 3301,  
Texas City, TX 77590-3301

Dues: \$6.50/individual, \$10/family; yr.

Newsletter: None

Web site: <http://www.rootsweb.com/~txteas/>

## Texas State Genealogical Society

Meets: Yearly Conference,  
for 2003: 7 & 8 November

Where: Hilton Austin Airport Hotel  
9515 New Airport Drive  
Austin, TX

Speakers: Helen Leary, CG, CGL, FASG  
Clint Lynch  
Marilyn Maniscalco Henley  
Robert de Berardinis

Contact: Betty Dunquez, President  
(409) 945-7055,  
bdunquez@aol.com  
P.O. Box 1141,  
Galveston, TX 77553-1141

Dues: \$20/individual or family; yr.

Newsletter: Yes

Web site: <http://www.rootsweb.com/~txsgs/>



## WHAT'S NEW? *Continued from page 6*

Indexed and the index is available at Clayton (France's Forgotten Legion).

The Galveston passenger lists, 1896-1951, have also arrived. The original film that Clayton had was of a very poor quality and incomplete. The new National Archives film is legible and complete. Another immigration set, *the Soundex Card Manifests of Aliens Arriving Hogansburg, Malone, Morristown, Nyando, Ogdensburg, Rooseveltown, and Waddington, New York, July 1929-April 1965, is also in.*

The complete set of territorial censuses, 1836, 1838, 1842, and 1846, for Wisconsin as well as the state censuses of 1855, 1875, 1885, and 1895 are available for researchers. The 1885 census of the Territory of New Mexico is another acquisition. This, like the Galveston passenger lists, replaces an early filming of a very poor quality.

Rounding out Clayton's census collection are the 1860 Virginia Census, Slave and Mortality Schedules, 1850-1880 Censuses, New Jersey Mortality Schedules, and thanks to a contribution from Emily Croom, the 1810 New York Census Manufacturing Schedule.

For those researching immigrants into Philadelphia or those immigrating to eastern Pennsylvania, Clayton now has the Index to Naturalizations from the Eastern District for Pennsylvania, 1795-1951. Photocopies of the underlying documents made from microfilm may be ordered from the National Archives sub-depot in New York City or the National Archives themselves.

### 1930 CENSUS REPORT

All 1930 census microfilm donations placed before April 1, 2003, almost 400 reels, are in the microfilm drawers, although it only took the National Archives four attempts this year to get the order correct. The states of Alabama, Mississippi, Pennsylvania, and Tennessee are complete and in the drawer.

Thanks to a very generous donation by an anonymous CLF member

who recently retired from NASA and moved to Georgetown, the states of Kansas and Alaska are now fully subscribed and ordered. The remainder of the microfilm, 14 reels, needed to complete Kentucky have also been subscribed and ordered and should be at Clayton by newsletter time.

As of press time for this issue of *The CLF Newsletter*, the following states and territories are completed for the 1930 census (underlined states mean the microfilm is at Clayton):

Alabama, Alaska, Arizona, Arkansas, Hawaii, Kansas, Kentucky, Louisiana, Maryland, Mississippi, Nevada, New Mexico, New York, Oklahoma, Panama Canal Zone, Pennsylvania, Tennessee, Vermont, West Virginia, and Wyoming.

All three sets of 1930 Census finding aids are at Clayton along with completed sets of 1930 Soundex for Arkansas, Louisiana, and West Virginia. Luckily, several on-line genealogy sites have indexes for the 1930 census to assist researchers.

### Late Arrival from Ontario, Canada!

Thanks to a contribution from Dr. Frances Arrighi, Clayton Library received the first three rolls of the thirty-six roll set of Ontario Immigration Office Records (RG 11) microfilm. The first four reels of film are also called the "Hawke Papers" for A.B. Hawke, the first emigration official for Upper Canada (Ontario). They contain his letter books, hospital registers, Irish Potato Famine entrants, plus British widows and orphans. Previously, this film was only available from Columbia University. The Ontario Provincial Archives recently purchased these records and now have made them available.

With this gift, Clayton Manager Marje Harris asked CLF to purchase the remaining thirty-three rolls, which was done immediately. The film was delivered right at press time and should be available at the time members receive this newsletter. For more detail about these records, see the Province of Ontario Web site at:

<http://www.archives.gov.on.ca/english/interloan/i-immigration-t.htm>

The complete list of the records is as follows:

RG 11-1, MS 690911, Chief Emigrant Agent's Letter Book;

RG 11-2, MS 6912, Kingston Agent's Letter Book;

RG 11-3, MS 6913, Toronto Office, assisted immigration registers;

RG 11-4, MS 6914, Toronto Office, arrival registers;

RG 11-5, MS 6915, Toronto Office, financial records;

RG 11-6, MS 6916, Toronto, hospital records of immigrants (184748);

RG 11-7, MS 6917, 1875 and 1888 children reports;

The remaining reels are Department of Immigration formal records, 18691901:

RG 11-10, MS 847, Reel 1, Passage Bonus Receipts, 187375;

RG 11-23, MS 847, Reels 15, Applications for Refund Bonus, 187278;

RG 11-25, MS 847, Reel 5, Passage Warrants Applications, 187288;

RG 11-17, MS 847, Reels 68, Arrival Records, 18621881;

RG 11-20, MS 847, Reel 8, Miscellaneous records, 18691896;

RG 11-18, MS 847, Reel 8, Bonus Certificates, 187274;

RG 11-14, MS 847, Reel 8, Refund Bonus Lists, 187275;

RG 11-8-1, MS 847, Reels 921, Numbered Correspondence;

RG 11-8-2, MS 847, Reel 22, Unnumbered Correspondence;

RG 16, MS 847, Reel 23, Assisted Passage Certificates, 187273;

RG 11-22, MS 847, Reels 2327, Refund Bonus Certificates, 187374; and

RG 11-24, MS 847, Reel 27, Six Dollar Bonus Certificates, 1875.



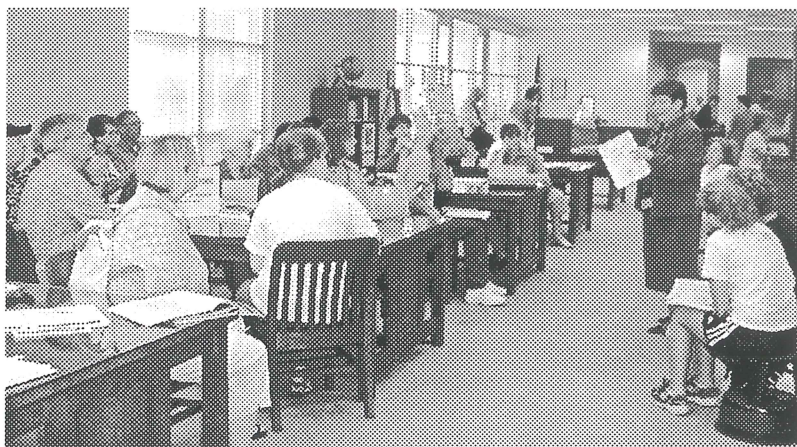


## CHEROKEE CLASS AT CLAYTON

CLF Volunteer and Cherokee Nation certified researcher Marjorie "Marj" Lowe brought her 32-student Leisure Learning Cherokee History and Genealogy class to Clayton Library on Saturday, June 28 for an introduction to using the resources of Clayton Library. Clayton Library Manager Marje Harris taught the two-hour class on the resources for census research as well as Dawes roll and related materials.

This course by Marj and her fellow Cherokee Nation certified teachers, Deborah Scott and Steve Triplett, is offered twice yearly by Leisure Learning, in January and June. There are three classes in Cherokee history and genealogy for those interested in discovering their Cherokee background, including the trip to Clayton. The course costs \$35 with \$5 for materials.

Native American nations have their own certification program for certifying researchers to determine eligibility for citizenship in their respective nation. The Cherokee Nation courses are taught yearly in Tahlequah, Oklahoma, by Chad Smith, an attorney in Tahlequah and newly re-elected chief of the Cherokee Nation. Those interested in learning more about the Cherokee Cultural Society should refer to the CLF list of area genealogical societies on page 8 for more information.



## COLONIAL AMERICAN RESEARCH TOOLS AVAILABLE

Some powerful new tools for colonial American research can now be available from the U.K. Public Record Office/National Archives. Clayton Library Manager Marje Harris asked Clayton Library Friends to secure firm bids for these two sets of positive microfilm of the actual documents. There is not a "reel by reel" breakdown as usual, but donors' names and their memorials or testimonials will go on the box(es) of the colony that they contribute towards (*donations may be eligible for tax deductibility as CLF is a tax-exempt 501.c (3) corporation, check with your tax preparer*).

The totals for the two microfilm collections are about \$1551.52 (at an exchange rate of £1 = \$1.60). The film collections are divided into two sets. The first set contains formal land grants, land patents, and land conveyances. Most of the land documents come with indexes on the film or are chronologically or alphabetically sorted. The second set contains financial accounts and miscellaneous reports. Most of the films of the second set are not available for researchers in the U.S., the same is true for the majority of films in the first set.

New England in the list below is defined as that part of New England not formally part of the established colonies at that time. East Florida is defined as modern day Florida east of the Apalachicola River (primarily St. Augustine) and southern Georgia up to the latitude of Natchez, Mississippi. West Florida is defined as the area between the Mississippi River, except Orleans, Jefferson, and St. Charles Parishes) and the Apalachicola River, from the Gulf Coast to the latitude of Natchez, Mississippi. Thus, West Florida contained the cities of Natchez, Mobile, Biloxi, Pensacola, Baton Rouge, and Pascagoula.

### West Florida means Alabama & Mississippi

Of particular mention are the conveyance records of West Florida. Easily 90% of the records of colonial Mobile and southern Alabama were lost after 1905. In 2000, a small set of boxes were discovered in the cupola of the Mobile County Courthouse containing some records for the period of 1788-1798. They have now been microfilmed, but little of the voluminous documents described in *The Favrot Papers* (in the Louisiana Section at

Clayton) survive. These documents cover the period of 1763-1781. Winston De Ville, FASG, has published a few of the documents from this series concerning Mobile and Natchez, but most have not been published. There is an additional guide for those documents concerning the areas contained in modern day Mississippi, Rowland's *Mississippi Provincial Archives: English Dominion*. (in the Mississippi Section at Clayton). *English Dominion* also contains selections from the colonial governors' correspondence which is not being requested by Marje Harris.

### Collection #1 (\$1100.08): Land Grants and Patents, Conveyances

North Carolina — Grants of Land;  
South Carolina — Grants of Land;  
East Florida — Reports of Commissioners for East Florida Claims;  
West Florida — Grants of Land, Mortgages, Conveyances, etc.;  
Georgia — Grants of Land;  
Georgia — Abstracts of Grants of Land;  
New England — Patents, grants;  
New York — Abstracts, patents, conveyances of land; and  
Virginia — Patents.

### Collection #2 (\$451.44): Accounts and miscellaneous reports

[General] Entry Books — Commissions, Instructions, warrants, licenses, grants, letters;  
Georgia — Letters from trustees establishing colony;  
Georgia — Account on Progress of Colony;  
Georgia — Answer to the Charges against Rev. T. Boscmworth in the Indian War in 1749;  
Massachusetts — Treasurer's accounts;  
New England — Petitions, Reports;  
New York — Accounts of expenditures for subsistence of Palatine settlers, 1710-1714;  
New York — Accounts of state of various rights of New York, 1717-1720;  
Virginia — Report on Enquiry for Virginia Affairs and Its Settling, 1677.



## Texas Records Being Microfilmed for Clayton Library

The documents of the Atascosito Archives, the Hardin Papers, and other early records from the Sam Houston Regional Library in Liberty are being microfilmed in Austin thanks to the donations to Clayton Library Friends. This is part of the CLF drive to acquire any and all records pertaining to Texas per the directive and challenge of Clayton Manager Marje Harris. It is a challenge because of the estimated \$500,000 to purchase existing microfilmed records. The estimated cost is unknown for those documents in Texas, Mexico, and Spain that have never been microfilmed.

In pursuit of this goal, is the historic agreement between the Hispanic Genealogical Society and CLF to complete the collection of Texas Border Crossings (see page 4 in this issue of the *CLF Newsletter*) and the purchase last year of microfilm of all Texas newspapers prior to 1845.

CLF directors Don Pusch and Bert de Berardinis traveled to Austin in July to meet with Texas State Archivist Chris La Plante to identify additional early Texas records in the state archives and state library and to arrange for their microfilming. Pusch and de Berardinis also traveled to the General Land Office (concerning Texas land and military records) and

the Texas National Guard headquarters. Further details were not available at press time.

To date, Clayton Library Friends has acquired the calendar to the Robert Bruce Blake Collection as well as Robert Blake's transcriptions and translations to the Nacogdoches Archives to go with the calendar and microfilm of the original documents of the Nacogdoches Archives. Of course, the microfilm of the two unfilmed boxes of documents of the Nacogdoches Archives was already available at Clayton. The originals are stored at the Texas State Archives and Library.

The entire six volume set of translations and transcriptions to the Laredo Archives by Brother Robert D. Wood, SM, of the University of St. Mary in San Antonio has been purchased and is in cataloguing. The volumes are:

Wood, Robert D. *Documentos referentes a los indios* [*Documents on the Indians*]. Archivos de Laredo series, vol. 2. San Antonio: p.p., 1998;

Wood, Robert D. *Documentos para la genealogía*. Archivos de Laredo series, vol. 1 San Antonio: p.p., 1998;

Wood, Robert D. *Documents for*

*the History of Laredo*. Archivos de Laredo series, vol. 3. San Antonio: p.p., 1999;

Wood, Robert D. *The History of Mexico, 1809-1845*, in the Laredo Archives. Archivos de Laredo series, vol. 4. San Antonio: p.p., 2000;

Wood, Robert D. *Index to the Municipal Correspondence, 1825-1845, and Verbal Arbitrations and Decisions, 1832-1842*. Archivos de Laredo series, vol. 5. San Antonio: p.p., 2000; and

Wood, Robert D. *Death and Taxes*. Archivos de Laredo, vol. 6. San Antonio: p.p., 2001.

The complete personal name index, also by Wood, and the eighteen roll microfilm collection of the Laredo Archives has also been purchased for Clayton. The originals, owned by the state of Texas, are housed at the University of St. Mary in San Antonio.

Permission is currently being sought for acquiring the microfilm of the early sacramental record books of Laredo, San Antonio, Goliad, and other early Texas settlements. Once permission is obtained, CLF will be asking for donations for the purchase of these microfilms.

## CLAYTON HOUSE NEEDS YOU!

Temporarily, the Clayton staff is down to fourteen from its budgeted sixteen. With this situation, it is important that our members be aware of the need for volunteers, especially for the Clayton House. Every volunteer hour at the Clayton House means an hour that staff is available in the Library. During this summer it is crucial to help out when possible.

Clayton House training takes only 10 to 15 minutes and can be done a few days in advance or even the same day if arranged in advance. For those of you who are spending the day at Clayton, an hour or two at the desk at the Clayton House will make a big difference.

Those interested in devoting an hour or two or three month, please contact CLF Volunteer Coordinator Alexander "Sandy" Scott at (713) 921-0964 or e-mail him at: [ascott@cadcom.net](mailto:ascott@cadcom.net) or [sandy@3405.com](mailto:sandy@3405.com).

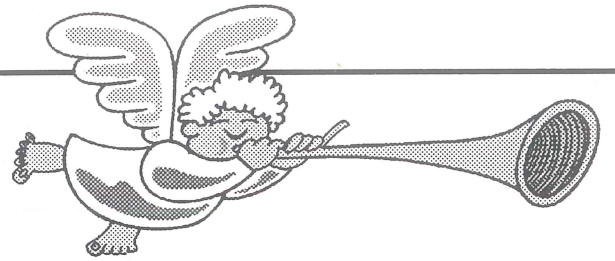
Volunteers, while at the Clayton House, have an option of whether they wish to help out Clayton Library with Houston funeral home records, doing stops and targets on microfilm, or typing microfilm box labels. Or, they can elect to work on their own research while at the desk. The rules of Clayton Library are to be observed while at the Clayton House — no eating, drinking, or non-authorized use of the computer is permitted.

Your help is needed, especially on Monday, Tuesday, and Wednesday evenings from 6 pm. to 9 p.m. and from noon to 2 p.m. on Saturday, Friday, and Thursday (in that order). Volunteers who reach 50, 300, or 500 hours of cumulative volunteer service receive various awards from Houston Public Library and are honored at the volunteer awards ceremony each year (see page 6 concerning the honoring of the 2002 CLF volunteers).





# Angels Report



The periodical budget for Clayton Library has been cut for 2004. Please help by underwriting one or more of the periodical subscriptions listed below. By donating funds for any of these periodicals or needed back issues you will become a Clayton "Angel." Your donation will be acknowledged in *The CLF Newsletter*.

To become an "Angel," please contact Liz Hicks, 746 Edgebrook Dr., Houston, TX 77034-2030, phone (713) 944-1118, email: [erootrot@usa.net](mailto:erootrot@usa.net).

## Periodicals needing "Angel" sponsors for 2004:

- Annals of Wyoming* \$20.00
- Alabama Genealogical Society Magazine* \$15.00
- The Carolina Herald and Newsletter & Greenville Co. Gen. Soc. Journal* (SC) \$20.00
- Central Alabama Genealogical Society Biannual* \$25.00
- Central Georgia Genealogical Society Quarterly* \$20.00
- Chicago Genealogist* \$20.00
- Family History Capers* (Washtenaw Co., MI) \$10.00
- The Family Tree* (United Kingdom) \$49.17
- Flint Genealogical Quarterly* (Michigan) \$17.00
- Florida Historical Quarterly* \$40.00
- The Foothills Inquirer* (Colorado) \$15.00
- Gems of Genealogy* (Wisconsin) \$10.00
- Georgia Genealogical Society Quarterly* \$30.00
- Georgia Settlers* (multiple counties) \$18.00
- The Giles County Historical Society Bulletin* (TN) \$10.00
- Illinois State Genealogical Society Quarterly* \$25.00
- Argyll Colony Plus* (NC Scottish Heritage Society) \$30.00
- Indiana Genealogist* \$20.00
- Le Raconteur* (Louisiana) \$15.00
- Lifelines* (NY, Canada) \$25.00
- Lithuanian Heritage Magazine* \$29.95
- MASSOG* (Mass.) \$25.00
- The Middle Tennessee Journal of Genealogy and History* \$20.00
- Montgomery Genealogical Society Quarterly* (Alabama) \$12.00
- The Northeast Mississippi Historical & Gen. Society Quarterly* \$15.00



*Polish Footprints* (Publication of the Polish Gen. Society of Texas) \$20.00

*Rodziny* (Publ. Of the Polish Genealogical Society of America) \$20.00

*Revista* (Cuban Genealogical Society) \$20.00

*Ross County Genealogical Society Newsletter* (Ohio) \$13.00

*Tap Roots* (East Alabama) \$20.00

*Tennessee Genealogy and History* \$20.00

*Topeka Genealogical Society Quarterly* (Kansas) \$20.00

*Upper South Carolina Genealogy & History* \$20.00

*Vermont Genealogy* \$20.00

*Washington State Genealogical Society Newsletter* \$10.00

*The Genie* (ARK-LA-TX Gen. Assn.) \$12.50

*Pipost* (St. Croix, WI) \$15.00

*Minnesota Genealogist* \$28.00

*Mississippi River Routes* \$20.00

*Chronicles of Smith County Texas* \$20.00

*Vital Record* (Godfray Memorial Library, Middletown, CT) \$24.00

*Yakima Valley Genealogical Society Bulletin* (Washington State) \$28.00

*Family Records TODAY* (publication of the American Family Records Assn.) \$25.00

*The Times* (North Carolina) \$15.00

We would like to thank and acknowledge the following Clayton Library Friends who have become "Angels":

Mr. Emile A. Bussemey, missing back issue of Connecticut Maple Leaf to complete volume, and 5 year subscription to same.

Mr. And Mrs. Jack Calkins, subscription to Clarke County Historical Society Quarterly (Alabama)

Mr. Richard L. Gregg, Seneca Searchers (Ohio)

The Polish Genealogical Society of Texas, Mr. Pete Wessner, President, Polish Footprints and Rodziny

Mrs. Betty Jean Ryman, donation to Angel program

and a very special thank you to

Mr. J. Byron Wake donation of funds for American Genealogical Biographical Index in memory of M. Lynda A. Wake.

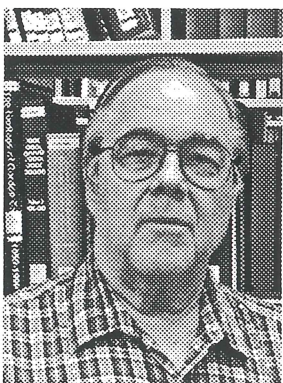


## NEW CLF DIRECTORS

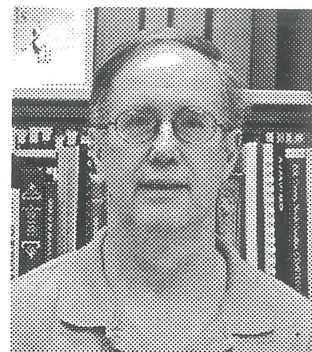
**T**eri Hall Little spends most of her time researching and documenting the history of NW Harris County. She serves as the President, (2nd term) of Chaparral (Tomball) Genealogical Society and Library, which celebrated its 20th Anniversary last year.

Teri's main genealogical and historical interest is the protection and preservation of historic cemeteries in NW Harris County. Teri serves as the Historian, (5th term) for Perry and Hargrave-Hilton Cemeteries. Ms. Hall-Little also represents the more than 80 private, non-profit, family and church cemeteries located in the area to the Texas state legislature. After spending the last several years educating our elected officials on the plight of historic cemeteries in Texas, she was successful in the movement of the Texas Cemetery Laws from the Health and Safety Code to the Texas Funeral Services Commission. This change will go into effect September 1, 2003 and will mean increased protection for the historic cemeteries in Texas. Teri instructs historic cemeteries operating today in all facets of cemetery management. The Texas Funeral Services Commission often refers cemeteries from all over the state to her.

Teri is the daughter of CLF Member William M. Hall, whose family history can be traced back to colonial times. Through her mother, Sylvia O'Dell Hall, Teri is a first generation American. Her mother, born in Newport, Isle of Wight, England did not get her citizenship until after Teri was born, thus making Teri a "first-generation" American. Teri is a member of the San Jacinto Chapter, Daughters of the American Revolution. Teri is married to Don, who is a 5th generation descendant of the Hargrave family of the Cypress-Fairbanks area, and they have three children, Christopher, Brenna, and Lizzie, (who still lives at home).



**A**lexander Perry ("Sandy") Scott is a native of Auburn, central New York. His father is a first-generation American born of Scottish parents from Glasgow. His mother's side of the family is deeply rooted in colonial New York and New England. He is a graduate of the Illinois Institute of Technology in Chicago, and for almost twenty-five years was employed in the petrochemical industry as a computer-aided drafting designer. He has been married to the former Kathleen Crow for over twenty years and has been a resident of Houston for over thirty years.



Sandy has been actively researching his family for the past ten years. Mary Smith Fay, his friend and mentor until her death in July 2000, encouraged him to begin study and research for becoming a professional genealogist. He has published three family histories: *The Family of William Jackson Bowen* (2000); *The Ancestors and Descendants of John Arthur McDonald and Elizabeth Geib of Del Rio, Texas* (2001); and *The Ancestors of E. L. "Pete" Wehner of Houston, Texas* (2001). A fourth publication, *The Jack and Gloria Dukworth Family*, will be out later this year. This October, he will be the featured speaker at the Lady Washington Chapter, DAR, talking on the Perry family of Rhode Island.

Sandy is a member of the Houston Genealogical Forum, the National Genealogical Society, and the New York Genealogical and Biographical Society, and is currently the president of the San Jacinto Chapter, Association of Professional Genealogists. In May 2003, he was appointed to the board of Clayton Library Friends and is currently serving as the CLF volunteers coordinator.

**D**ickie K. "Dick" Warren is a founding member of the Bay Area Genealogical Society (BAGS) and is currently serving as the Second Vice President in charge of Member Programs. Dick is also a member of the Houston Genealogical Forum and the Cherokee Cultural Society. Retirement has allowed him to pursue his genealogical and ancestral lines as well as his wife of 49 years, Glenda Brown Warren. They have four daughters and six grandchildren from one end of the U.S. to the other!

Dick is a real "rocket scientist." During his forty-five year professional career at NASA, the U.S. Air Force, and Boeing, Dick developed and organized space flight crew requirements; analyzed flight crew mission operations plans, and developed detailed space vehicle and flight crew interface coordination details. Dick participated in every manned space flight program including projects Mercury, Gemini, Apollo, Apollo-Soyuz, Skylab, Space Shuttle, and Space Station. Dick has worked for the NASA at the Johnson Space Center, NASA Headquarters, Goddard Space Flight Center, Kennedy Space Center, and contractors McDonnell Douglas-Boeing, General Dynamics/Convair, Pratt and Whitney Aircraft, and the U. S. Air Force. Dick is also a former USAF fighter pilot.

Dick has been routinely recognized by both NASA and McDonnell Douglas-Boeing for his technical contributions well as his leadership in the analysis, development, documentation and training of astronauts in launch vehicle powered flight elements. During that time he produced 23 official flight crew checklists and flight handbooks. Additionally, Dick received a Presidential Community Service Commendation from Richard Nixon for his work with public education in the Friendswood, Texas public schools and on the Board of Education (1966-1981).



## NEXT MEETING

Karen Stanley to speak on "Genealogy Research Using Clayton's Online Databases"



August's speaker, Karen Stanley, was born in Cape Girardeau, Missouri, and is descended from a long line of English, Scot, Mennonite, and German farmers. Although she has lived outside of Missouri for more than twenty years, she is still a Midwesterner at heart.

Karen holds a BA in History from Florida State University, an MLS from the University of Texas, and an MBA from Rice University. She worked for many years in Houston in the petroleum exploration industry. In 1999, she decided to abandon the petroleum industry and return to the library world. Karen has been an avid genealogy researcher since the age of 14, and is delighted to be working at one of the best genealogy libraries in the country.

10 a.m. — Bayland Community Center

## ROBERT DE BERARDINIS TO SPEAK

CLF director Robert de Berardinis will be speaking on "Old Texas Records, Newly Discovered" at the Texas State Genealogical Society Meeting this November 7 in Austin. The featured speaker on November 8 is Helen Leary, CG, FASG. For more details, check the TSGS website at: [http://www.root\\_sweb.com/~txsgs/](http://www.root_sweb.com/~txsgs/) or check the current issue of their journal, *Stripes*, at Clayton.

de Berardinis has also been asked by The Humble Area Genealogical Society to give a seminar on March 27. Three of the four topics chosen are "Louisiana Research," "Early East Texas and Nacogdoches Research," and "Researching WorldCat and Inter Library Loan for Expanding Your Record Search." For more details consult The Humble Area Genealogical Society website at: <http://www.rootsweb.com/~txthags/> or consult their society's listings on the list of area genealogical societies elsewhere in this issue.



CLAYTON LIBRARY FRIENDS

P. O. Box 271078

Houston, Texas 77277-1078

NON-PROFIT ORG.

U. S. POSTAGE

PAID

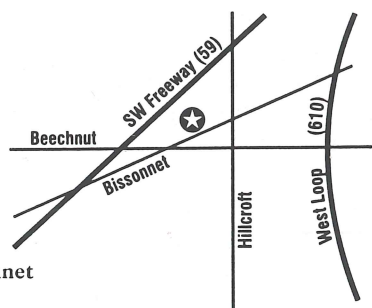
Houston, TX

Permit No. 1747

Clayton  
Library  
Friends  
Meeting  
Location:

Bayland  
Community  
Center

6400 Bissonnet  
Houston



TO:

## ANNUAL MEMBERSHIP DUES

Individual .....\$10.00  
Two People (same Address) .....\$15.00

## SPECIAL FRIENDS

Contributor .....\$1 to \$49  
Donor .....\$50 to \$99  
Patron .....\$100 to \$249  
Sponsor .....\$250-499  
Benefactor .....\$500 and more